

## SS18L1 RABBIT PAB

**Cat.#:** S219559

**Product Name:** Anti-SS18L1 Rabbit Polyclonal Antibody

**Synonyms:** CREST; LP2261

**UNIPROT ID:** O75177 (Gene Accession - BC034494 )

**Background:** This gene encodes a calcium-responsive transactivator which is an essential subunit of a neuron-specific chromatin-remodeling complex. The structure of this gene is similar to that of the SS18 gene. Mutations in this gene are involved in amyotrophic lateral sclerosis (ALS). Alternatively spliced transcript variants have been found for this gene.

**Immunogen:** Fusion protein of human SS18L1

**Applications:** ELISA, IHC

**Recommended Dilutions:** IHC: 50-200; ELISA: 5000-10000

**Host Species:** Rabbit

**Clonality:** Rabbit Polyclonal

**Isotype:** Immunogen-specific rabbit IgG

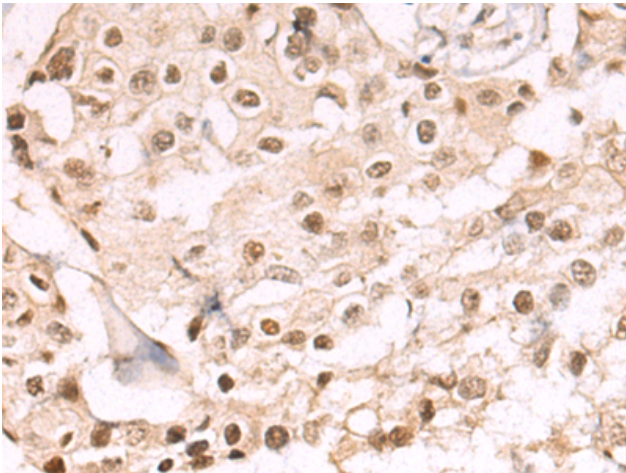
**Purification:** Antigen affinity purification

**Species Reactivity:** Human, Mouse, Rat

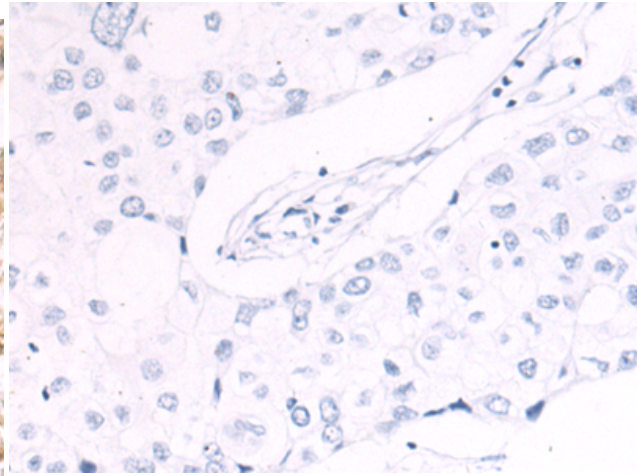
**Constituents:** PBS (without Mg<sup>2+</sup> and Ca<sup>2+</sup>), pH 7.4, 150 mM NaCl, 0.05% Sodium Azide and 40% glycerol

**Research Areas:** Epigenetics and Nuclear Signaling

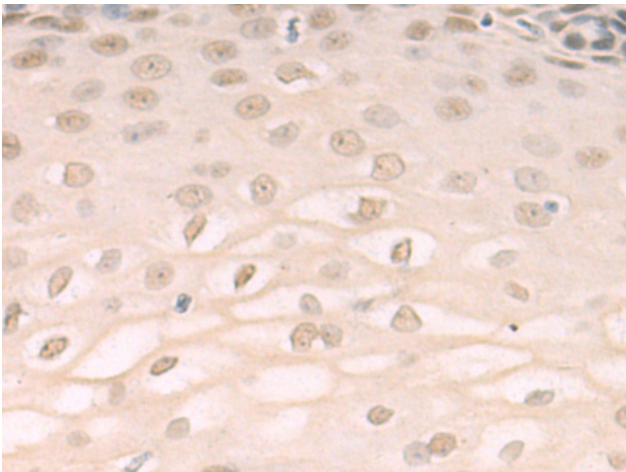
**Storage & Shipping:** Store at -20°C. Avoid repeated freezing and thawing



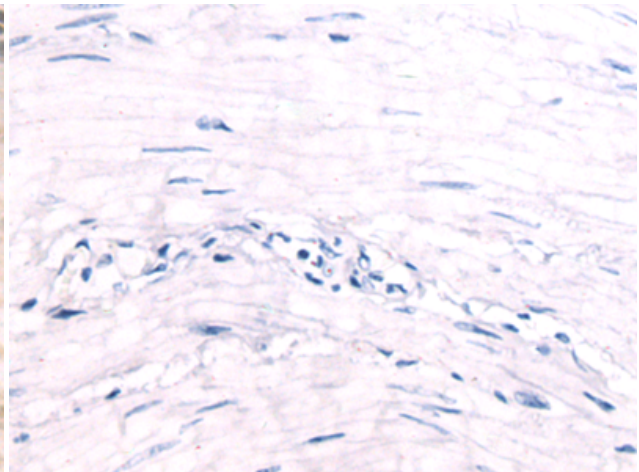
Immunohistochemistry analysis of paraffin embedded Human breast cancer tissue using 219559(SS18L1 Antibody) at a dilution of 1/65(Nucleus and Cytoplasm).



In comparison with the IHC on the left, the same paraffin-embedded Human breast cancer tissue is first treated with the fusion protein and then with 219559(Anti-SS18L1 Antibody) at dilution 1/65.



The image on the left is immunohistochemistry of paraffin-embedded Human esophagus cancer tissue using 219559(Anti-SS18L1 Antibody) at a dilution of 1/65.



In comparison with the IHC on the left, the same paraffin-embedded Human esophagus cancer tissue is first treated with fusion protein and then with D227746(Anti-SS18L1 Antibody) at dilution 1/65.