

SSB RABBIT PAB

Cat.#: S220210

Product Name: Anti-SSB Rabbit Polyclonal Antibody

Synonyms: La; LARP3; La/SSB

UNIPROT ID: P05455 (Gene Accession - NP_003133.1)

Background: The protein encoded by this gene is involved in diverse aspects of RNA metabolism, including binding and protecting poly(U) termini of nascent RNA polymerase III transcripts from exonuclease digestion, processing 5' and 3' ends of pre-tRNA precursors, acting as an RNA chaperone, and binding viral RNAs associated with hepatitis C virus. Autoantibodies reacting with this protein are found in the sera of patients with Sjogren syndrome and systemic lupus erythematosus. Alternative promoter usage results in two different transcript variants which encode the same protein.

Immunogen: Synthetic peptide of human SSB

Applications: ELISA, IHC

Recommended Dilutions: IHC: 50-200; ELISA: 2000-5000

Host Species: Rabbit

Clonality: Rabbit Polyclonal

Isotype: Immunogen-specific rabbit IgG

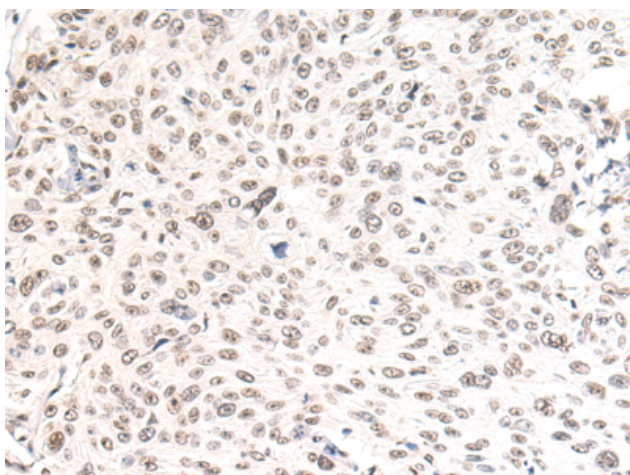
Purification: Antigen affinity purification

Species Reactivity: Human, Mouse, Rat

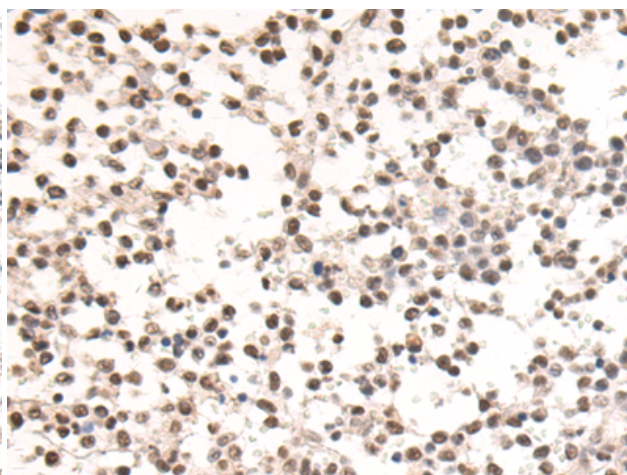
Constituents: PBS (without Mg²⁺ and Ca²⁺), pH 7.4, 150 mM NaCl, 0.05% Sodium Azide and 40% glycerol

Research Areas: Epigenetics and Nuclear Signaling, Immunology

Storage & Shipping: Store at -20°C. Avoid repeated freezing and thawing



Immunohistochemistry analysis of paraffin-embedded Human cervical cancer tissue using 220210(SSB Antibody) at a dilution of 1/50(Nucleus).



Immunohistochemistry analysis of paraffin-embedded Human breast cancer tissue using 220210(Anti-SSB Antibody) at a dilution of 1/50.