

## SSTR4 RABBIT PAB

**Cat.#:** S220213

**Product Name:** Anti-SSTR4 Rabbit Polyclonal Antibody

**Synonyms:** SS4R; SS4-R; SS-4-R

**UNIPROT ID:** P31391 (Gene Accession - NP\_001043 )

**Background:** Somatostatin acts at many sites to inhibit the release of many hormones and other secretory proteins. The biologic effects of somatostatin are probably mediated by a family of G protein-coupled receptors that are expressed in a tissue-specific manner. SSTR4 is a member of the superfamily of receptors having seven transmembrane segments and is expressed in highest levels in fetal and adult brain and lung.

**Immunogen:** Synthetic peptide of human SSTR4

**Applications:** ELISA, IHC

**Recommended Dilutions:** IHC: 15-50; ELISA: 1000-5000

**Host Species:** Rabbit

**Clonality:** Rabbit Polyclonal

**Isotype:** Immunogen-specific rabbit IgG

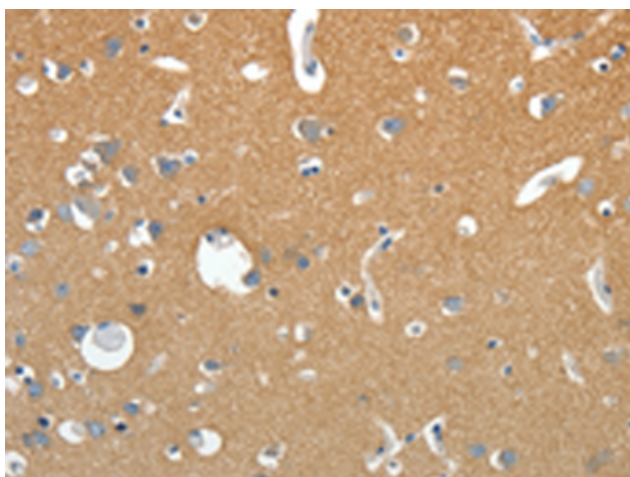
**Purification:** Antigen affinity purification

**Species Reactivity:** Human, Mouse, Rat

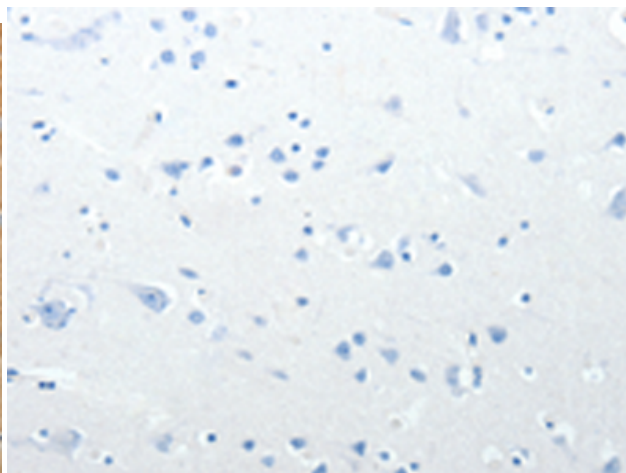
**Constituents:** PBS (without Mg<sup>2+</sup> and Ca<sup>2+</sup>), pH 7.4, 150 mM NaCl, 0.05% Sodium Azide and 40% glycerol

**Research Areas:** Signal Transduction, Neuroscience

**Storage & Shipping:** Store at -20°C. Avoid repeated freezing and thawing



Immunohistochemistry analysis of paraffin embedded Human brain tissue using 220213(SSTR4 Antibody) at a dilution of 1/20(Cytoplasm, Cell membrane).



In comparison with the IHC on the left, the same paraffin-embedded Human brain tissue is first treated with the synthetic peptide and then with 220213(Anti-SSTR4 Antibody) at dilution 1/20.