

## STAG2 RABBIT PAB

**Cat.#:** S211523

**Product Name:** Anti-STAG2 Rabbit Polyclonal Antibody

**Synonyms:** SA2; SA-2; SCC3B; bA517O1.1

**UNIPROT ID:** Q8N3U4 (Gene Accession - BC001765 )

**Background:** The protein encoded by this gene is a subunit of the cohesin complex, which regulates the separation of sister chromatids during cell division. Targeted inactivation of this gene results in chromatid cohesion defects and aneuploidy, suggesting that genetic disruption of cohesin is a cause of aneuploidy in human cancer. Alternatively spliced transcript variants encoding different isoforms have been found for this gene.

**Immunogen:** Fusion protein of human STAG2

**Applications:** ELISA, WB, IHC

**Recommended Dilutions:** IHC: 25-100;WB: 200-1000;ELISA: 1000-2000

**Host Species:** Rabbit

**Clonality:** Rabbit Polyclonal

**Isotype:** Immunogen-specific rabbit IgG

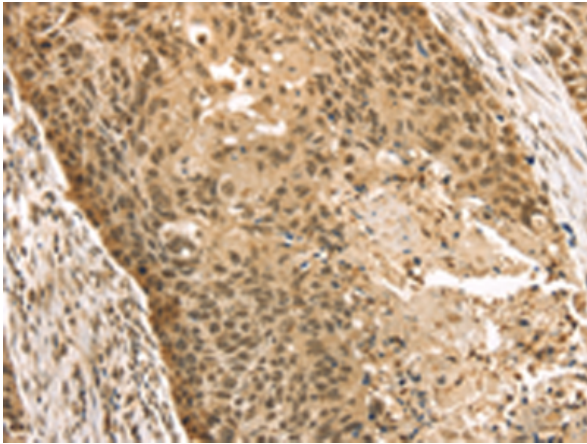
**Purification:** Antigen affinity purification

**Species Reactivity:** Human, Mouse

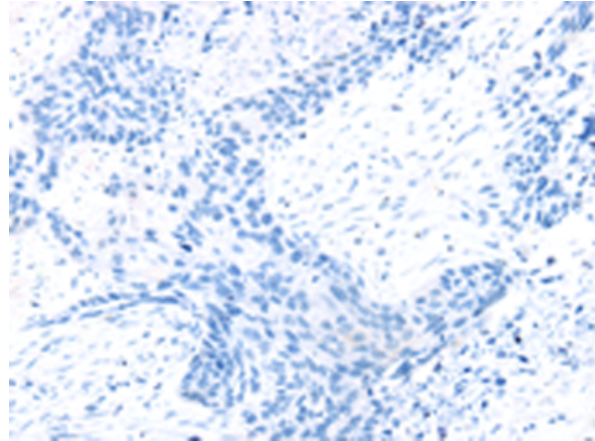
**Constituents:** PBS (without Mg<sup>2+</sup> and Ca<sup>2+</sup>), pH 7.4, 150 mM NaCl, 0.05% Sodium Azide and 40% glycerol

**Research Areas:** Epigenetics and Nuclear Signaling, Cancer

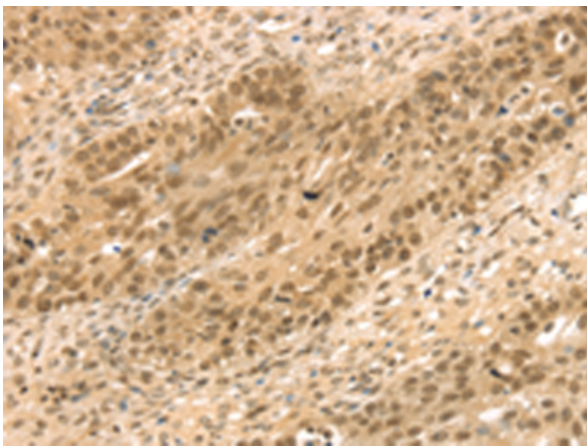
**Storage & Shipping:** Store at -20°C. Avoid repeated freezing and thawing



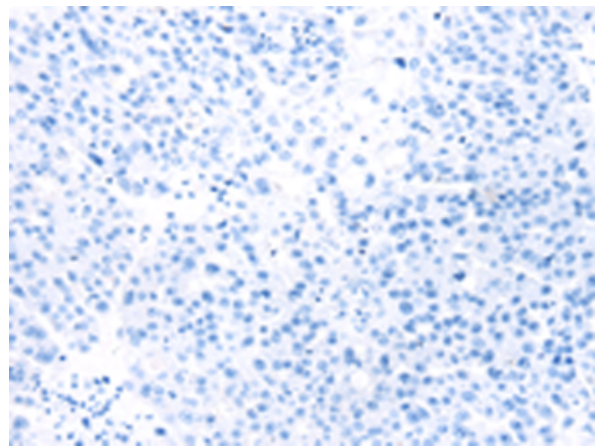
Immunohistochemistry analysis of paraffin embedded Human esophagus cancer tissue using 211523(STAG2 Antibody) at a dilution of 1/35(Nucleus).



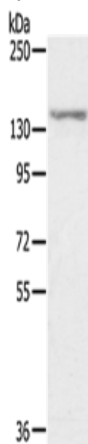
In comparison with the IHC on the left, the same paraffin-embedded Human esophagus cancer tissue is first treated with the fusion protein and then with 211523(Anti-STAG2 Antibody) at dilution 1/35.



The image on the left is immunohistochemistry of paraffin-embedded Human breast cancer tissue using 211523(Anti-STAG2 Antibody) at a dilution of 1/35.



In comparison with the IHC on the left, the same paraffin-embedded Human breast cancer tissue is first treated with fusion protein and then with D123087(Anti-STAG2 Antibody) at dilution 1/35.



Gel: 6%SDS-PAGE, Lysate: 40 µg;  
 Lane: MCF7 cells;  
 Primary antibody: 211523(STAG2 Antibody) at dilution 1/300;  
 Secondary antibody: Goat anti rabbit IgG at 1/8000 dilution;  
 Exposure time: 5 seconds



# Product Description

Pioneering GTPase and Oncogene Product Development since 2010

---