

## STARD5 RABBIT PAB

**Cat.#:** S220977

**Product Name:** Anti-STARD5 Rabbit Polyclonal Antibody

**Synonyms:**

**UNIPROT ID:** Q9NSY2 (Gene Accession - NP\_871629 )

**Background:** Cholesterol homeostasis is regulated, at least in part, by sterol regulatory element (SRE)-binding proteins (e.g., SREBP1; MIM 184756) and by liver X receptors (e.g., LXRA; MIM 602423). Upon sterol depletion, LXRs are inactive and SREBPs are cleaved, after which they bind promoter SREs and activate genes involved in cholesterol biosynthesis and uptake.

**Immunogen:** Synthetic peptide of human STARD5

**Applications:** ELISA, WB, IHC

**Recommended Dilutions:** IHC: 40-150;WB: 500-2000;ELISA: 2000-5000

**Host Species:** Rabbit

**Clonality:** Rabbit Polyclonal

**Isotype:** Immunogen-specific rabbit IgG

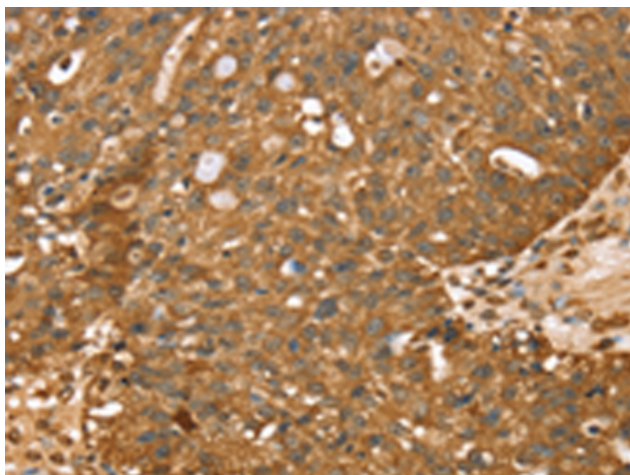
**Purification:** Antigen affinity purification

**Species Reactivity:** Human, Mouse

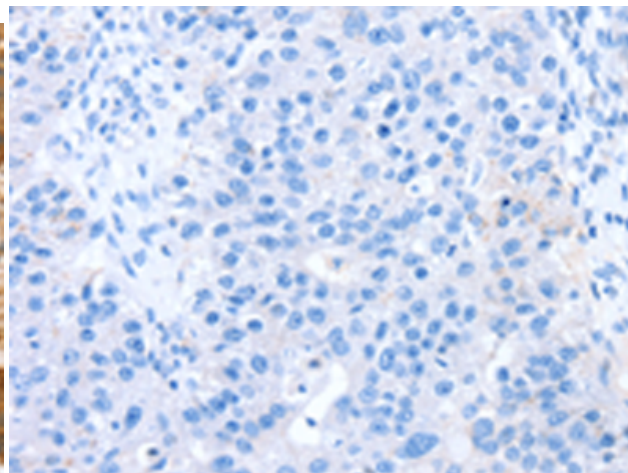
**Constituents:** PBS (without Mg<sup>2+</sup> and Ca<sup>2+</sup>), pH 7.4, 150 mM NaCl, 0.05% Sodium Azide and 40% glycerol

**Research Areas:** Metabolism, Cancer, Cardiovascular

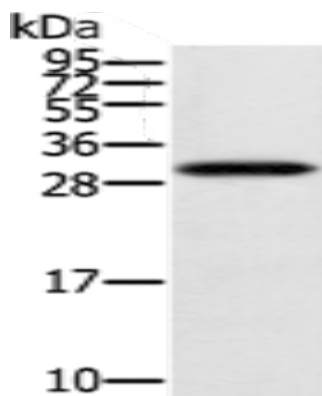
**Storage & Shipping:** Store at -20°C. Avoid repeated freezing and thawing



Immunohistochemistry analysis of paraffin embedded Human breast cancer tissue using 220977(STARD5 Antibody) at a dilution of 1/40(Cytoplasm).



In comparison with the IHC on the left, the same paraffin-embedded Human breast cancer tissue is first treated with the synthetic peptide and then with 220977(Anti-STARD5 Antibody) at dilution 1/40.



Gel: 12%SDS-PAGE, Lysate: 40  $\mu$ g;  
Lane: Human fetal brain tissue;  
Primary antibody: 220977(STARD5 Antibody)  
at dilution 1/400;  
Secondary antibody: Goat anti rabbit IgG at  
1/8000 dilution;  
Exposure time: 2 minutes