

STAT1 (6C2) MOUSE MAB

Cat.#: N261116

Product Name: Anti-STAT1 (6C2) Mouse Monoclonal Antibody

Synonyms: STAT1; Signal transducer and activator of transcription 1-
alpha/beta; Transcription factor ISGF-3 components p91/p84

UNIPROT ID: P42224

Background: The protein encoded by this gene is a member of the STAT protein family. In response to cytokines and growth factors, STAT family members are phosphorylated by the receptor associated kinases, and then form homo- or heterodimers that translocate to the cell nucleus where they act as transcription activators.

Immunogen: Purified recombinant human STAT1 protein fragments expressed in E.coli

Applications: WB,IP

Recommended Dilutions: WB: 1/500-1/1000 IP: 1/20

Host Species: Mouse

Clonality: Mouse Monoclonal

Clone ID: 6C2-F7-D12

MW: Calculated MW: 87 kDa; Observed MW: 91 kDa

Isotype: IgG2a

Purification: Affinity Purified

Species Reactivity: Human,Monkey

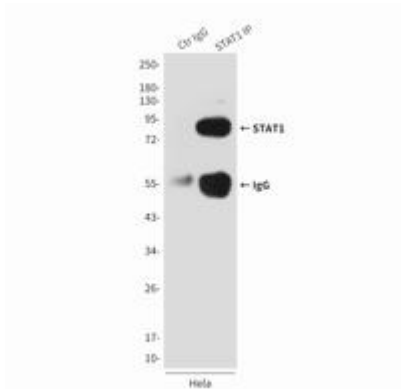
Conjugation: Unconjugated

Modification: Unmodified

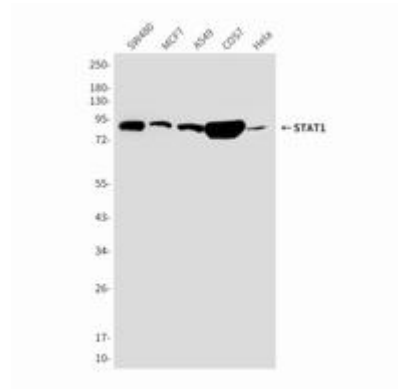
Constituents: PBS (without Mg²⁺ and Ca²⁺), pH 7.3 containing 50% glycerol, 0.5% BSA and 0.02% sodium azide

Research Areas: Signal Transduction

Storage & Shipping: Store at -20°C. Avoid repeated freezing and thawing



Immunoprecipitation analysis of STAT1 (6C2) in HeLa lysates using STAT1 antibody.



Western blot analysis of STAT1 in HeLa, MCF-7, COS7, SW480 and A549 lysates using STAT1 antibody.