

STAT1 RABBIT MAB

Cat.#: N262939

Product Name: Anti-STAT1 Rabbit Monoclonal Antibody

Synonyms: STAT1; Signal transducer and activator of transcription 1-
alpha/beta; Transcription factor ISGF-3 components p91/p84

UNIPROT ID: P42224

Background: The protein encoded by this gene is a member of the STAT protein family. In response to cytokines and growth factors, STAT family members are phosphorylated by the receptor associated kinases, and then form homo- or heterodimers that translocate to the cell nucleus where they act as transcription activators.

Immunogen: A synthetic peptide of human STAT1

Applications: WB, ICC/IF, IP

Recommended Dilutions: WB: 1/500-1/1000 IF: 1/50-1/200 IP: 1/20

Host Species: Rabbit

Clonality: Rabbit Monoclonal

Clone ID: R07-7A3

MW: Calculated MW: 87 kDa; Observed MW: 87 kDa

Isotype: IgG

Purification: Affinity Purified

Species Reactivity: Human

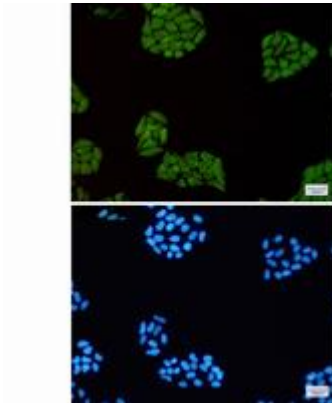
Conjugation: Unconjugated

Modification: Unmodified

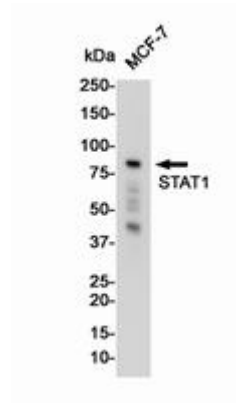
Constituents: PBS (without Mg²⁺ and Ca²⁺), pH 7.3 containing 50% glycerol, 0.5% BSA and 0.02% sodium azide

Research Areas: Signal Transduction

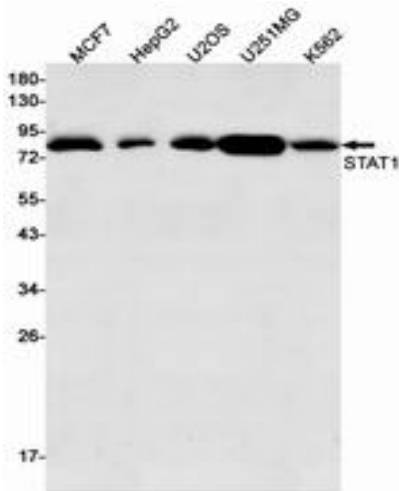
Storage & Shipping: Store at -20°C. Avoid repeated freezing and thawing



Immunocytochemistry analysis of STAT1 (green) in HeLa using STAT1 antibody, and DAPI (blue)



Western blot analysis of STAT1 in MCF-7 lysates using STAT1 antibody.



Western blot analysis of STAT1 in MCF-7, HepG2, U2OS, U251MG, K562 lysates using STAT1 antibody.