

## STAT1 RABBIT MAB

**Cat.#:** N262938

**Product Name:** Anti-STAT1 Rabbit Monoclonal Antibody

**Synonyms:** STAT1; Signal transducer and activator of transcription 1-  
alpha/beta; Transcription factor ISGF-3 components p91/p84

**UNIPROT ID:** P42224

**Background:** The protein encoded by this gene is a member of the STAT protein family. In response to cytokines and growth factors, STAT family members are phosphorylated by the receptor associated kinases, and then form homo- or heterodimers that translocate to the cell nucleus where they act as transcription activators.

**Immunogen:** A synthetic peptide of human STAT1 alpha

**Applications:** WB,IP

**Recommended Dilutions:** WB: 1/500-1/1000 IP: 1/20

**Host Species:** Rabbit

**Clonality:** Rabbit Monoclonal

**Clone ID:** R03-2K5

**MW:** Calculated MW: 87 kDa; Observed MW: 87 kDa

**Isotype:** IgG

**Purification:** Affinity Purified

**Species Reactivity:** Human,Mouse,Rat

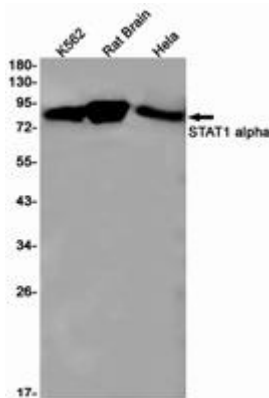
**Conjugation:** Unconjugated

**Modification:** Unmodified

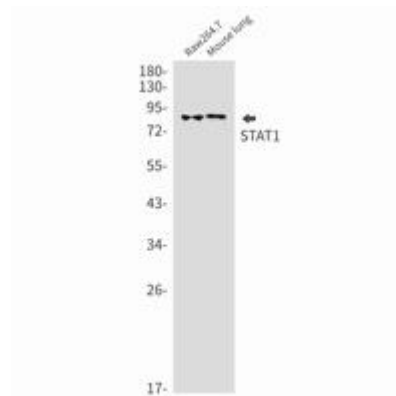
**Constituents:** PBS (without Mg<sup>2+</sup> and Ca<sup>2+</sup>), pH 7.3 containing 50% glycerol, 0.5% BSA and 0.02% sodium azide

**Research Areas:** Signal Transduction

**Storage & Shipping:** Store at -20°C. Avoid repeated freezing and thawing



Western blot analysis of STAT1 alpha in K562, rat Brain, Hela lysates using STAT1 alpha antibody.



Western blot analysis of STAT1 in Raw264.7, mouse lung lysates using STAT1 antibody.