

## STAT1 RABBIT PAB

**Cat.#:** S216259

**Product Name:** Anti-STAT1 Rabbit Polyclonal Antibody

**Synonyms:** ISGF-3, STAT91

**UNIPROT ID:** P42224 (Gene Accession - BC002704 )

**Background:** The protein encoded by this gene is a member of the STAT protein family. In response to cytokines and growth factors, STAT family members are phosphorylated by the receptor associated kinases, and then form homo- or heterodimers that translocate to the cell nucleus where they act as transcription activators. This protein can be activated by various ligands including interferon- $\alpha$ , interferon- $\gamma$ , EGF, PDGF and IL6. This protein mediates the expression of a variety of genes, which is thought to be important for cell viability in response to different cell stimuli and pathogens. Two alternatively spliced transcript variants encoding distinct isoforms have been described.

**Immunogen:** Fusion protein of human STAT1

**Applications:** ELISA, IHC

**Recommended Dilutions:** IHC: 25-100; ELISA: 1000-2000

**Host Species:** Rabbit

**Clonality:** Rabbit Polyclonal

**Isotype:** Immunogen-specific rabbit IgG

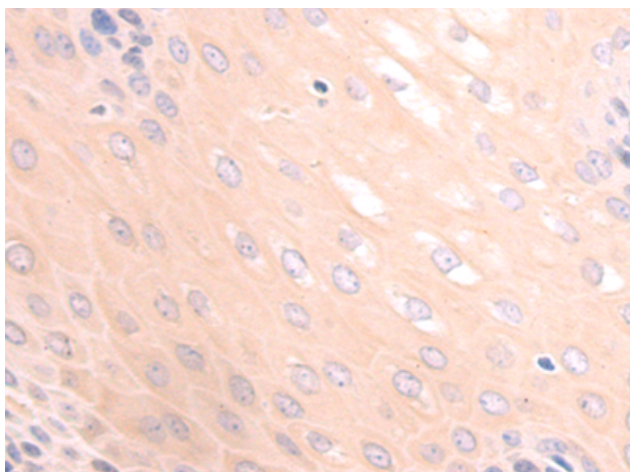
**Purification:** Antigen affinity purification

**Species Reactivity:** Human, Mouse

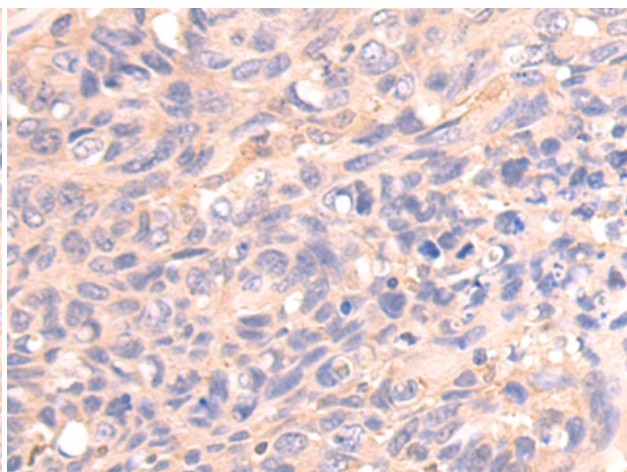
**Constituents:** PBS (without Mg<sup>2+</sup> and Ca<sup>2+</sup>), pH 7.4, 150 mM NaCl, 0.05% Sodium Azide and 40% glycerol

**Research Areas:** Signal Transduction, Epigenetics and Nuclear Signaling

**Storage & Shipping:** Store at -20°C. Avoid repeated freezing and thawing



Immunohistochemistry analysis of paraffin-embedded Human cervical cancer tissue using 216259(STAT1 Antibody) at a dilution of 1/20(Cytoplasm or Nucleus).



Immunohistochemistry analysis of paraffin-embedded Human colon cancer tissue using 216259(Anti-STAT1 Antibody) at a dilution of 1/20.