

## STAT2 RABBIT MAB

**Cat.#:** N263560

**Product Name:** Anti-STAT2 Rabbit Monoclonal Antibody

**Synonyms:** AW496480; 1600010G07Rik

**UNIPROT ID:** Q9WVL2

**Background:** Signal transducer and activator of transcription that mediates signaling by type I interferons (IFN- $\alpha$  and IFN- $\beta$ ). Following type I IFN binding to cell surface receptors, Jak kinases (TYK2 and JAK1) are activated, leading to tyrosine phosphorylation of STAT1 and STAT2.

**Immunogen:** A synthetic peptide of mouse STAT2

**Applications:** WB,IHC-P

**Recommended Dilutions:** WB: 1/500-1/1000 IHC: 1/50-1/100

**Host Species:** Rabbit

**Clonality:** Rabbit Monoclonal

**Clone ID:** R01-2F6

**MW:** Calculated MW: 105 kDa; Observed MW: 113 kDa

**Isotype:** IgG

**Purification:** Affinity Purified

**Species Reactivity:** Human,Mouse

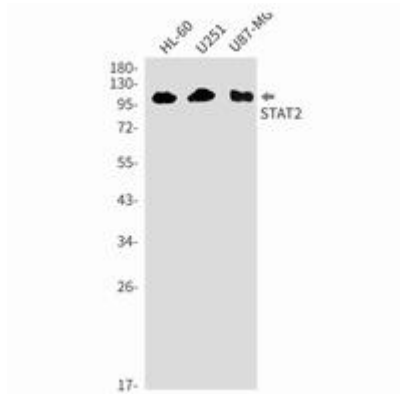
**Conjugation:** Unconjugated

**Modification:** Unmodified

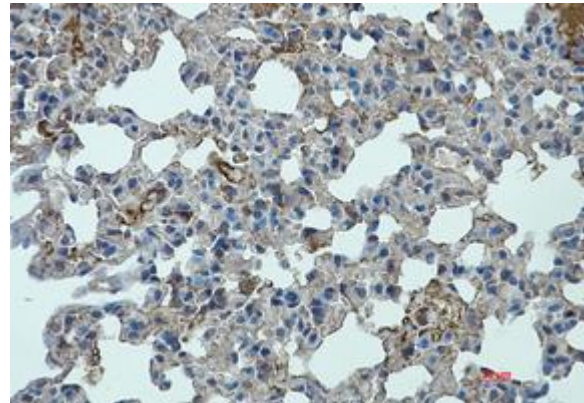
**Constituents:** PBS (without Mg<sup>2+</sup> and Ca<sup>2+</sup>), pH 7.3 containing 50% glycerol, 0.5% BSA and 0.02% sodium azide

**Research Areas:** Signal Transduction

**Storage & Shipping:** Store at -20°C. Avoid repeated freezing and thawing



Western blot analysis of STAT2 in HL-60, U251, U87-MG lysates using STAT2 antibody.



Immunohistochemistry analysis of paraffin-embedded mouse lung using STAT2 antibody. High-pressure and temperature Sodium Citrate pH 6.0 was used for antigen retrieval.