

STAT3 RABBIT MAB

Cat.#: N261663

Product Name: Anti-STAT3 Rabbit Monoclonal Antibody

Synonyms: STAT3; APRF; Signal transducer and activator of transcription 3; Acute-phase response factor

UNIPROT ID: P40763

Background: The protein encoded by this gene is a member of the STAT protein family. In response to cytokines and growth factors, STAT family members are phosphorylated by the receptor associated kinases, and then form homo- or heterodimers that translocate to the cell nucleus where they act as transcription activators.

Immunogen: A synthetic peptide of human STAT3

Applications: WB, ICC/IF, IP

Recommended Dilutions: WB: 1/500-1/1000 IF: 1/50-1/200 IP: 1/20

Host Species: Rabbit

Clonality: Rabbit Monoclonal

Clone ID: R01-9G3

MW: Calculated MW: 88 kDa; Observed MW: 88 kDa

Isotype: IgG

Purification: Affinity Purified

Species Reactivity: Human, Rat

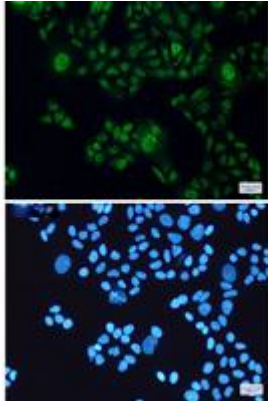
Conjugation: Unconjugated

Modification: Unmodified

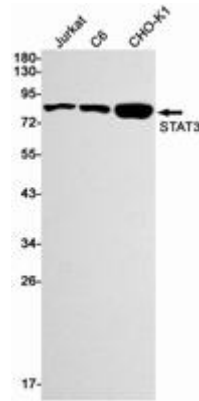
Constituents: PBS (without Mg²⁺ and Ca²⁺), pH 7.3 containing 50% glycerol, 0.5% BSA and 0.02% sodium azide

Research Areas: Hypoxia Signal Transduction Hypoxia-induced

Storage & Shipping: Store at -20°C. Avoid repeated freezing and thawing



Immunocytochemistry analysis of STAT3 (green) in Hela using STAT3 antibody, and DAPI (blue)



Western blot analysis of STAT3 in Jurkat, C6, CHO-K1 lysates using STAT3 antibody.