

STAT4 RABBIT PAB

Cat.#: S216261

Product Name: Anti-STAT4 Rabbit Polyclonal Antibody

Synonyms: SLEB11

UNIPROT ID: Q14765 (Gene Accession - BC031212)

Background: The protein encoded by this gene is a member of the STAT family of transcription factors. In response to cytokines and growth factors, STAT family members are phosphorylated by the receptor associated kinases, and then form homo- or heterodimers that translocate to the cell nucleus where they act as transcription activators. This protein is essential for mediating responses to IL12 in lymphocytes, and regulating the differentiation of T helper cells. Mutations in this gene may be associated with systemic lupus erythematosus and rheumatoid arthritis. Alternate splicing results in multiple transcript variants that encode the same protein.

Immunogen: Fusion protein of human STAT4

Applications: ELISA, WB, IHC

Recommended Dilutions: IHC: 50-300;WB: 500-2000;ELISA: 5000-10000

Host Species: Rabbit

Clonality: Rabbit Polyclonal

Isotype: Immunogen-specific rabbit IgG

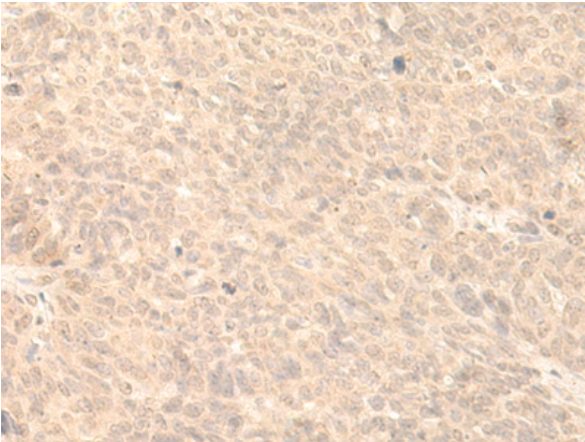
Purification: Antigen affinity purification

Species Reactivity: Human, Mouse

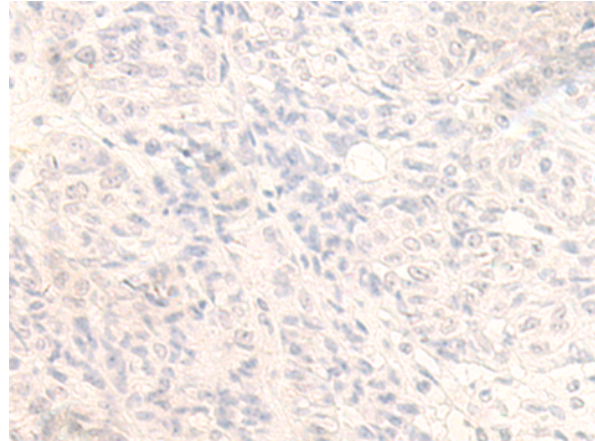
Constituents: PBS (without Mg²⁺ and Ca²⁺), pH 7.4, 150 mM NaCl, 0.05% Sodium Azide and 40% glycerol

Research Areas: Signal Transduction, Epigenetics and Nuclear Signaling

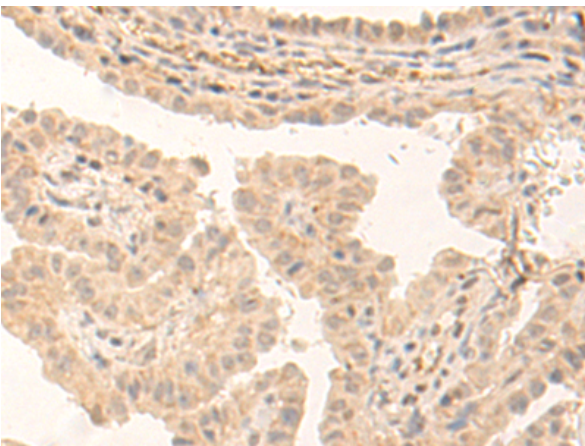
Storage & Shipping: Store at -20°C. Avoid repeated freezing and thawing



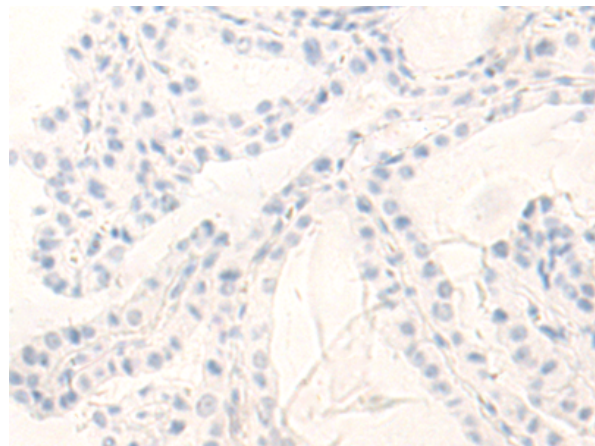
Immunohistochemistry analysis of paraffin embedded Human ovarian cancer tissue using 216261(STAT4 Antibody) at a dilution of 1/75(Cytoplasm and Nucleus).



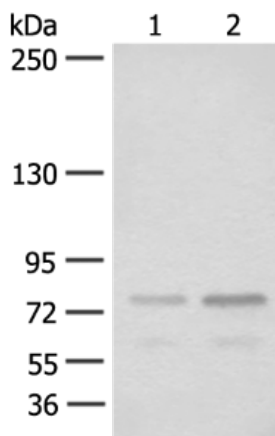
In comparison with the IHC on the left, the same paraffin-embedded Human ovarian cancer tissue is first treated with the fusion protein and then with 216261(Anti-STAT4 Antibody) at dilution 1/75.



The image on the left is immunohistochemistry of paraffin-embedded Human thyroid cancer tissue using 216261(Anti-STAT4 Antibody) at a dilution of 1/75.



In comparison with the IHC on the left, the same paraffin-embedded Human thyroid cancer tissue is first treated with fusion protein and then with D220086(Anti-STAT4 Antibody) at dilution 1/75.



Gel: 6%SDS-PAGE, Lysate: 40 µg;
Lane 1-2: TM4 and 293T cell lysates;
Primary antibody: 216261(STAT4 Antibody) at dilution 1/400;
Secondary antibody: Goat anti rabbit IgG at 1/8000 dilution;
Exposure time: 1 minute



Product Description

Pioneering GTPase and Oncogene Product Development since 2010
