

STAT5 RABBIT MAB

Cat.#: N262942

Product Name: Anti-STAT5 Rabbit Monoclonal Antibody

Synonyms: MGF; STAT5

UNIPROT ID: P42230

Background: Carries out a dual function: signal transduction and activation of transcription. Mediates cellular responses to the cytokine KITLG/SCF and other growth factors. May mediate cellular responses to activated FGFR1, FGFR2, FGFR3 and FGFR4. Binds to the GAS element and activates PRL-induced transcription. Regulates the expression of milk proteins during lactation.

Immunogen: Recombinant protein of mouse STAT5A

Applications: WB, ICC/IF, IP

Recommended Dilutions: WB: 1/500-1/1000 IF: 1/50-1/200 IP: 1/20

Host Species: Rabbit

Clonality: Rabbit Monoclonal

Clone ID: R09-5F2

MW: Calculated MW: 91 kDa; Observed MW: 91 kDa

Isotype: IgG

Purification: Affinity Purified

Species Reactivity: Human, Mouse, Rat

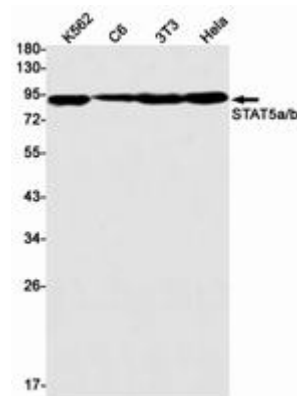
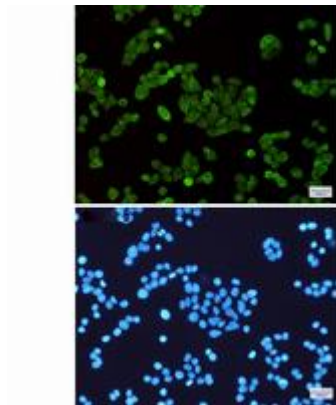
Conjugation: Unconjugated

Modification: Unmodified

Constituents: PBS (without Mg²⁺ and Ca²⁺), pH 7.3 containing 50% glycerol, 0.5% BSA and 0.02% sodium azide

Research Areas: Signal Transduction

Storage & Shipping: Store at -20°C. Avoid repeated freezing and thawing



Immunocytochemistry analysis of STAT5A/B (green) in HeLa using STAT5A/B antibody, and DAPI (blue) in HeLa using STAT5A/B antibody, and DAPI (blue) STAT5 antibody.

Western blot analysis of STAT5a/b in K562, C6, 3T3, HeLa lysates using STAT5 antibody.