

STATHMIN 2 RABBIT PAB

Cat.#: N225024

Product Name: Anti-Stathmin 2 Rabbit pAb

Synonyms: STMN2; SCG10; SCGN10; Stathmin-2; Superior cervical ganglion-10 protein; Protein SCG10

UNIPROT ID: Q93045

Background: Regulator of microtubule stability.

Immunogen: Synthesized peptide derived from the Internal region of human Stathmin-2.

Applications: WB,IHC-P,ELISA

Recommended Dilutions: WB: 1/500-1/1000 IHC: 1/50-1/100 ELISA: 1/10000

Host Species: Rabbit

Clonality: Rabbit Polyclonal

Clone ID: -

MW: Calculated MW: 21 kDa; Observed MW: 21 kDa

Isotype: IgG

Purification: Affinity Purified

Species Reactivity: Human,Mouse,Rat

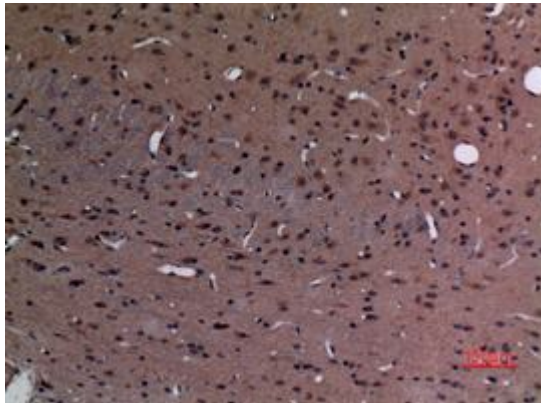
Conjugation: Unconjugated

Modification: Unmodified

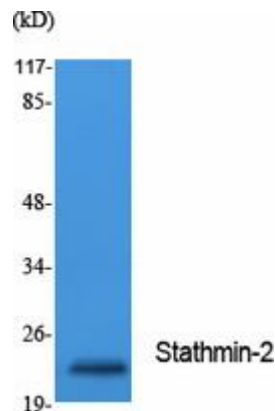
Constituents: PBS (without Mg²⁺ and Ca²⁺), pH 7.3 containing 50% glycerol, 0.5% BSA and 0.02% sodium azide

Research Areas: Neuroscience

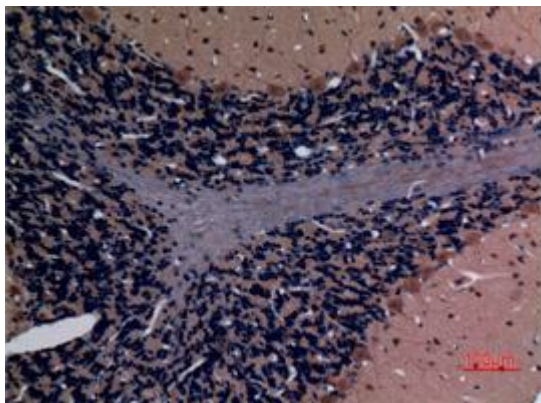
Storage & Shipping: Store at -20°C. Avoid repeated freezing and thawing



Immunohistochemistry analysis of paraffin-embedded rat brain using Stathmin 2 antibody. High-pressure and temperature Sodium Citrate pH 6.0 was used for antigen retrieval.



Western blot analysis of Stathmin 2 in Jurkat lysates using Stathmin2 antibody.



Immunohistochemistry analysis of paraffin-embedded rat brain using Stathmin 2 antibody. High-pressure and temperature Sodium Citrate pH 6.0 was used for antigen retrieval.



Immunohistochemistry analysis of paraffin-embedded mouse brain using Stathmin 2 antibody. High-pressure and temperature Sodium Citrate pH 6.0 was used for antigen retrieval.