

## STEAP2 RABBIT PAB

**Cat.#:** N225485

**Product Name:** Anti-STEAP2 Rabbit pAb

**Synonyms:** STEAP2; PCANAPI; STAMPI; Metalloreductase STEAP2; Prostate cancer-associated protein 1; Protein up-regulated in metastatic prostate cancer; PUMPCn; Six-transmembrane epithelial antigen of prostate 2; SixTransMembrane protein of prostate 1

**UNIPROT ID:** Q8NFT2

**Background:** Metalloreductase that has the ability to reduce both Fe<sup>3+</sup> to Fe<sup>2+</sup> and Cu<sup>2+</sup> to Cu<sup>1+</sup>. Uses NAD<sup>+</sup> as acceptor.

**Immunogen:** The antiserum was produced against synthesized peptide derived from human STEA2. AA range:431-480

**Applications:** IHC-P,IHC-F,ICC/IF,ELISA

**Recommended Dilutions:** IHC: 1/50-1/100 IF: 1/50-1/200 ELISA: 1/10000

**Host Species:** Rabbit

**Clonality:** Rabbit Polyclonal

**Clone ID:** -

**MW:** -

**Isotype:** IgG

**Purification:** Affinity Chromatography

**Species Reactivity:** Human,Mouse

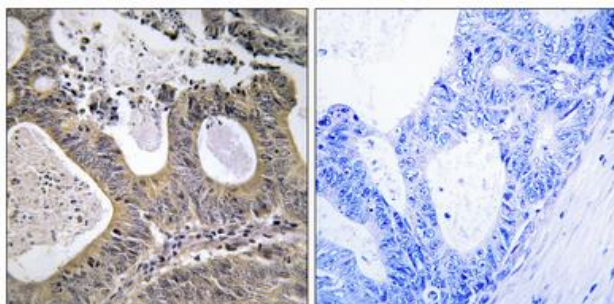
**Conjugation:** Unconjugated

**Modification:** Unmodified

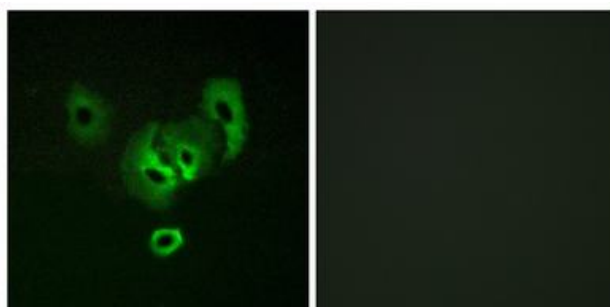
**Constituents:** PBS (without Mg<sup>2+</sup> and Ca<sup>2+</sup>), pH 7.3 containing 50% glycerol, 0.5% BSA and 0.02% sodium azide

**Research Areas:** Cancer

**Storage & Shipping:** Store at -20°C. Avoid repeated freezing and thawing



Immunohistochemical analysis of paraffin-embedded Human tonsils using STEAP2 antibody. Sample with blocking peptide on the right.High-pressure and temperature Sodium Citrate pH 6.0 was used for antigen retrieval.



Immunofluorescence analysis of STEAP2 in A549 cells using STEAP2 antibody. Sample with blocking peptide on the right.