

STING RABBIT MAB

Cat.#: N262999

Product Name: Anti-STING Rabbit Monoclonal Antibody

Synonyms: ERIS; MITA; MPYS; SAVI; NET23; STING; hMITA; hSTING; STING-beta; Transmembrane Protein 173

UNIPROT ID: Q86WV6

Background: Facilitator of innate immune signaling that promotes the production of type I interferon (IFN-alpha and IFN-beta). Innate immune response is triggered in response to non-CpG double-stranded DNA from viruses and bacteria delivered to the cytoplasm.

Immunogen: Recombinant protein of human TMEM173

Applications: WB, IHC-P

Recommended Dilutions: WB: 1/500-1/1000 IHC: 1/50-1/100

Host Species: Rabbit

Clonality: Rabbit Monoclonal

Clone ID: R06-9A7

MW: Calculated MW: 42 kDa; Observed MW: 42 kDa

Isotype: IgG

Purification: Affinity Purified

Species Reactivity: Human, Rat

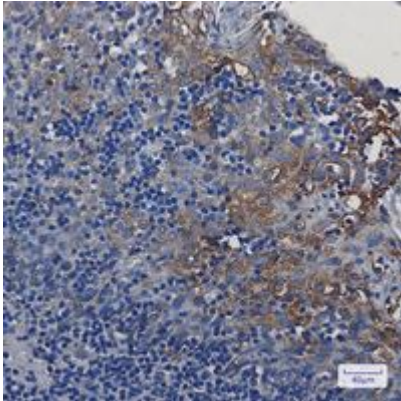
Conjugation: Unconjugated

Modification: Unmodified

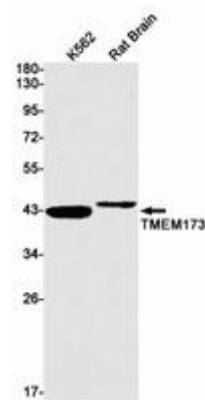
Constituents: PBS (without Mg²⁺ and Ca²⁺), pH 7.3 containing 50% glycerol, 0.5% BSA and 0.02% sodium azide

Research Areas: Immunology

Storage & Shipping: Store at -20°C. Avoid repeated freezing and thawing



Immunohistochemistry analysis of paraffin-embedded Human tonsil using TMEM173 antibody. High-pressure and temperature Sodium Citrate pH 6.0 was used for antigen retrieval.



Western blot analysis of TMEM173 in K562, rat Brain lysates using Sodium Transmembrane Protein 173 antibody.