

STIP1 RABBIT MAB

Cat.#: N262945

Product Name: Anti-STIP1 Rabbit Monoclonal Antibody

Synonyms: Hop; P60; STII; STIIL; STIPI; Stress induced phosphoprotein 1

UNIPROT ID: P31948

Background: Mediates the association of the molecular chaperones HSC70 and HSP90 (HSPCA and HSPCB).

Immunogen: A synthetic peptide of human STIP1

Applications: WB,IHC-P,IP

Recommended Dilutions: WB: 1/500-1/1000 IHC: 1/50-1/100 IP: 1/20

Host Species: Rabbit

Clonality: Rabbit Monoclonal

Clone ID: R04-3H1

MW: Calculated MW: 63 kDa; Observed MW: 63 kDa

Isotype: IgG

Purification: Affinity Purified

Species Reactivity: Human,Mouse,Rat

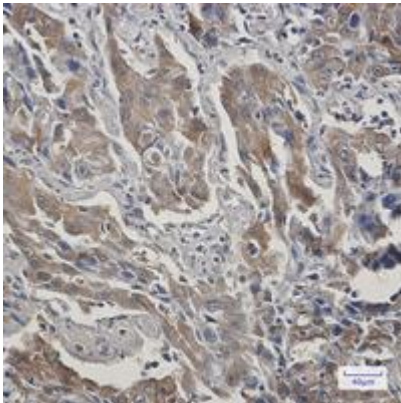
Conjugation: Unconjugated

Modification: Unmodified

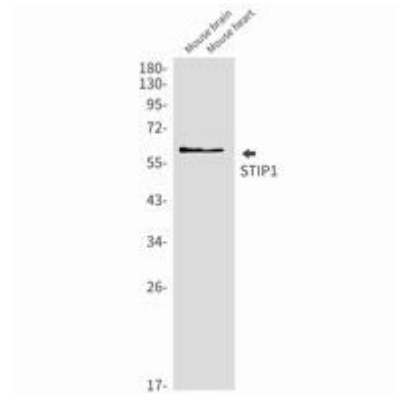
Constituents: PBS (without Mg²⁺ and Ca²⁺), pH 7.3 containing 50% glycerol, 0.5% BSA and 0.02% sodium azide

Research Areas: Signal Transduction

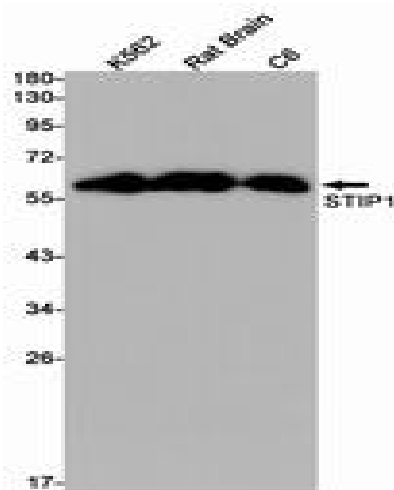
Storage & Shipping: Store at -20°C. Avoid repeated freezing and thawing



Immunohistochemistry analysis of paraffin-embedded Human lung cancer using STIP1 antibody. High-pressure and temperature Sodium Citrate pH 6.0 was used for antigen retrieval.



Western blot analysis of STIP1 in mouse brain, mouse heart lysates using STIP1 antibody.



Western blot analysis of STIP1 in K562, rat Brain, C6 lysates using STIP1 antibody.