

## STK32C RABBIT PAB

**Cat.#:** S220982

**Product Name:** Anti-STK32C Rabbit Polyclonal Antibody

**Synonyms:** PKE; YANK3

**UNIPROT ID:** Q86UX6 (Gene Accession - NP\_775846 )

**Background:** The protein encoded by this gene is a member of the serine/threonine protein kinase family. The specific function of this kinase is not known.

**Immunogen:** Synthetic peptide of human STK32C

**Applications:** ELISA, IHC

**Recommended Dilutions:** IHC: 20-100; ELISA: 1000-2000

**Host Species:** Rabbit

**Clonality:** Rabbit Polyclonal

**Isotype:** Immunogen-specific rabbit IgG

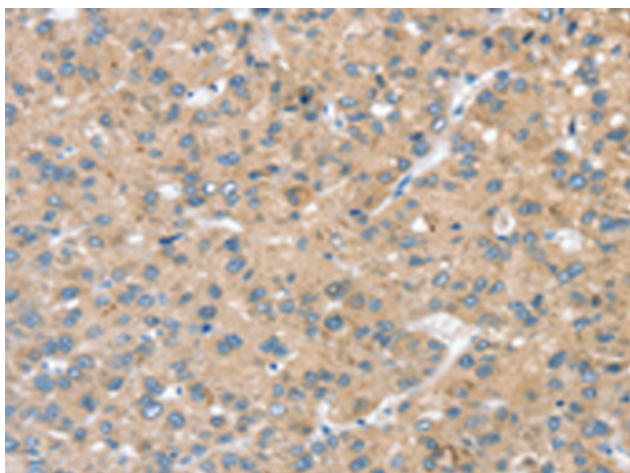
**Purification:** Antigen affinity purification

**Species Reactivity:** Human, Mouse

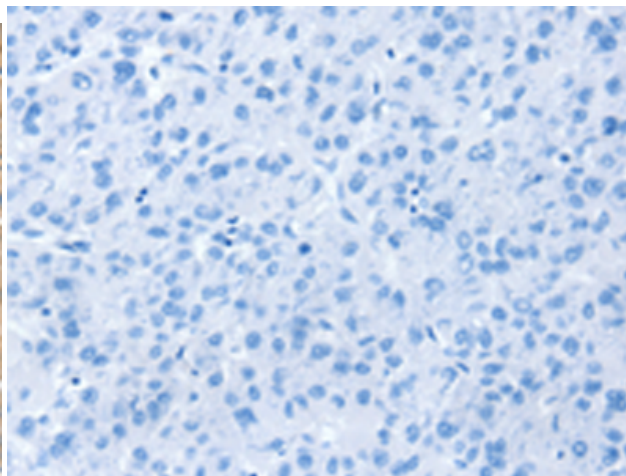
**Constituents:** PBS (without Mg<sup>2+</sup> and Ca<sup>2+</sup>), pH 7.4, 150 mM NaCl, 0.05% Sodium Azide and 40% glycerol

**Research Areas:** Signal Transduction

**Storage & Shipping:** Store at -20°C. Avoid repeated freezing and thawing



Immunohistochemistry analysis of paraffin embedded Human liver cancer tissue using 220982(STK32C Antibody) at a dilution of 1/20(Cytoplasm).



In comparison with the IHC on the left, the same paraffin-embedded Human liver cancer tissue is first treated with the synthetic peptide and then with 220982(Anti-STK32C Antibody) at dilution 1/20.