

## STMN2/STMN3/STMN4 RABBIT PAB

**Cat.#:** S219883

**Product Name:** Anti-STMN2/STMN3/STMN4 Rabbit Polyclonal Antibody

**Synonyms:** SCG10, SCGN10; SCLIP; RB3

**UNIPROT ID:** Q93045/Q9NZ72/Q9H169 (Gene Accession - NP\_008960/NP\_056978/NP\_110422 )

**Background:** This gene encodes a member of the stathmin family of phosphoproteins. Stathmin proteins function in microtubule dynamics and signal transduction. The encoded protein plays a regulatory role in neuronal growth and is also thought to be involved in osteogenesis. Reductions in the expression of this gene have been associated with Down's syndrome and Alzheimer's disease. Alternatively spliced transcript variants have been observed for this gene. A pseudogene of this gene is located on the long arm of chromosome 6.

**Immunogen:** Synthetic peptide of human STMN2/STMN3/STMN4

**Applications:** ELISA, WB, IHC

**Recommended Dilutions:** IHC: 50-200;WB: 500-2000;ELISA: 1000-5000

**Host Species:** Rabbit

**Clonality:** Rabbit Polyclonal

**Isotype:** Immunogen-specific rabbit IgG

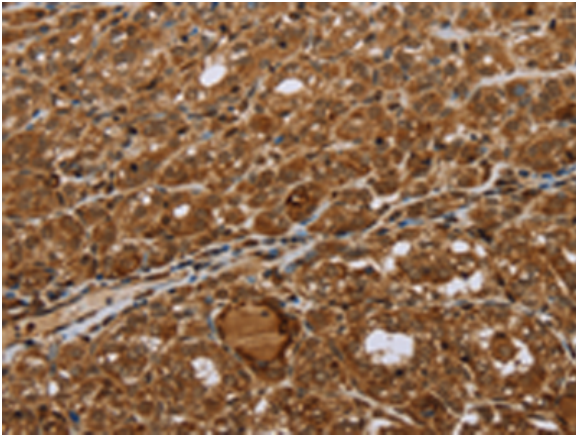
**Purification:** Antigen affinity purification

**Species Reactivity:** Human, Mouse

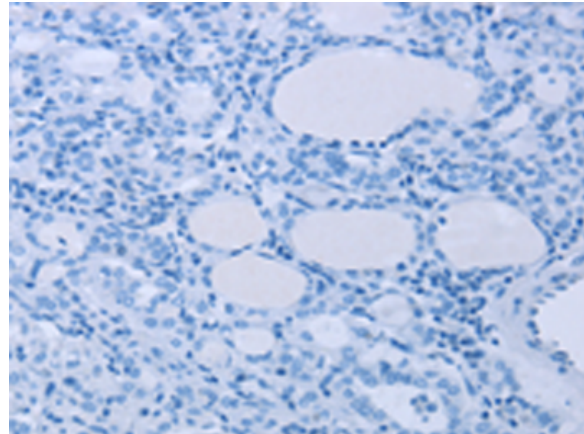
**Constituents:** PBS (without Mg<sup>2+</sup> and Ca<sup>2+</sup>), pH 7.4, 150 mM NaCl, 0.05% Sodium Azide and 40% glycerol

**Research Areas:** Neuroscience

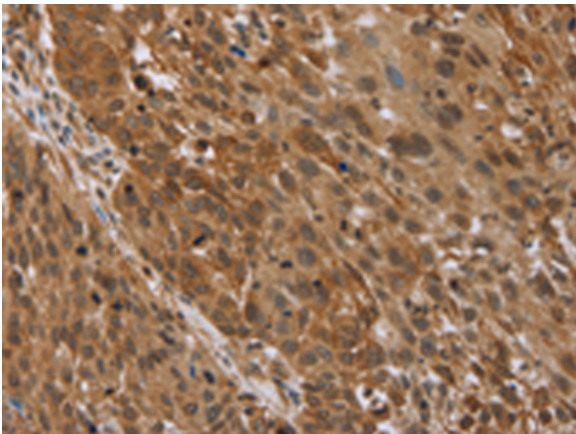
**Storage & Shipping:** Store at -20°C. Avoid repeated freezing and thawing



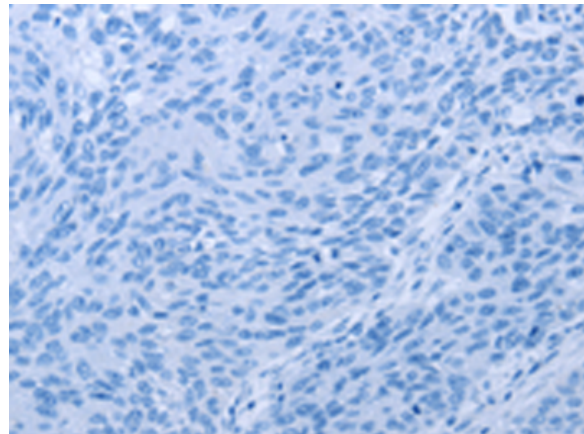
Immunohistochemistry analysis of paraffin embedded Human thyroid cancer tissue using 219883(STMN2/STMN3/STMN4 Antibody) at a dilution of 1/45(Cytoplasm).



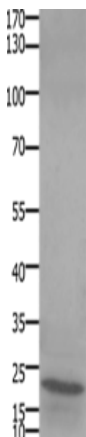
In comparison with the IHC on the left, the same paraffin-embedded Human thyroid cancer tissue is first treated with the synthetic peptide and then with 219883(Anti-STMN2/STMN3/STMN4 Antibody) at dilution 1/45.



The image on the left is immunohistochemistry of paraffin-embedded Human lung cancer tissue using 219883(Anti-STMN2/STMN3/STMN4 Antibody) at a dilution of 1/45.



In comparison with the IHC on the left, the same paraffin-embedded Human lung cancer tissue is first treated with synthetic peptide and then with D260546(Anti-STMN2/STMN3/STMN4 Antibody) at dilution 1/45.



Gel: 10+12%SDS-PAGE, Lysate: 30  $\mu$ g;  
Lane: Human liver cancer tissue;  
Primary antibody: 219883(STMN2/STMN3/STMN4 Antibody) at dilution 1/450;  
Secondary antibody: Goat anti rabbit IgG at 1/8000 dilution;  
Exposure time: 1 minute



# Product Description

Pioneering GTPase and Oncogene Product Development since 2010

---