

## STOML1 RABBIT PAB

**Cat.#:** S213070

**Product Name:** Anti-STOML1 Rabbit Polyclonal Antibody

**Synonyms:** SLP-1; STORP; hUNC-24

**UNIPROT ID:** Q9UBI4 (Gene Accession - BC034379 )

**Background:** May play a role in cholesterol transfer to late endosomes (PubMed:19696025). May play a role in modulating membrane acid-sensing ion channels. Can specifically inhibit proton-gated current of ASIC1 isoform 1. Can increase inactivation speed of ASIC3. May be involved in regulation of proton sensing in dorsal root ganglions (By similarity). May play a role in protecting FBXW7 isoform 3 from degradation (PubMed:23082202).

**Immunogen:** Fusion protein of human STOML1

**Applications:** ELISA, IHC

**Recommended Dilutions:** IHC: 150-300; ELISA: 5000-10000

**Host Species:** Rabbit

**Clonality:** Rabbit Polyclonal

**Isotype:** Immunogen-specific rabbit IgG

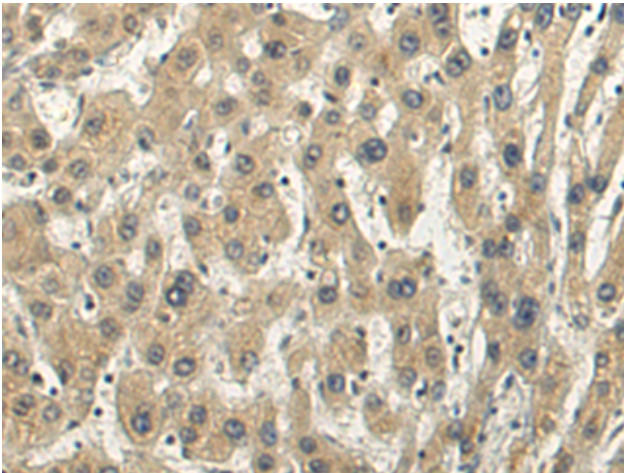
**Purification:** Antigen affinity purification

**Species Reactivity:** Human, Mouse

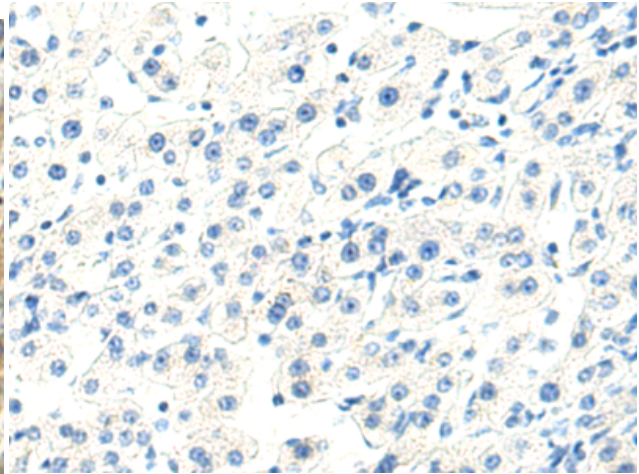
**Constituents:** PBS (without Mg<sup>2+</sup> and Ca<sup>2+</sup>), pH 7.4, 150 mM NaCl, 0.05% Sodium Azide and 40% glycerol

**Research Areas:** Cell Biology

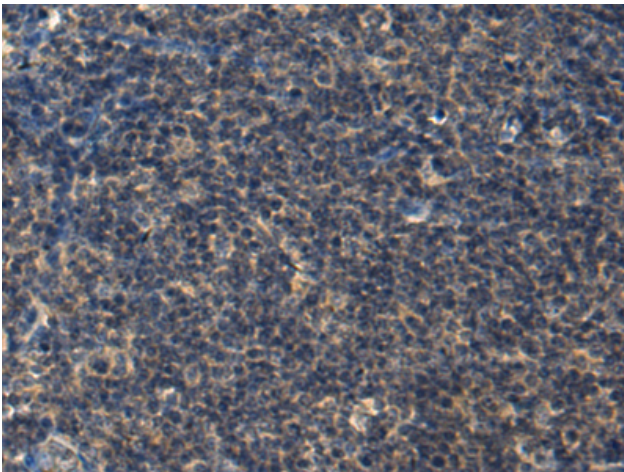
**Storage & Shipping:** Store at -20°C. Avoid repeated freezing and thawing



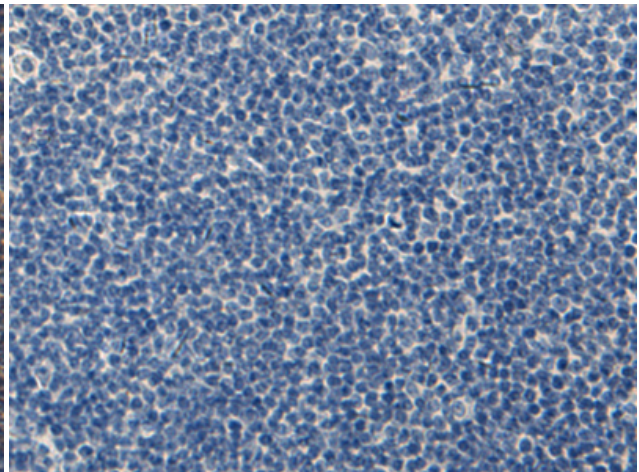
Immunohistochemistry analysis of paraffin embedded Human liver cancer tissue using 213070 (STOML1 Antibody) at a dilution of 1/200 (Cytoplasm).



In comparison with the IHC on the left, the same paraffin-embedded Human liver cancer tissue is first treated with the fusion protein and then with 213070 (Anti-STOML1 Antibody) at dilution 1/200.



The image on the left is immunohistochemistry of paraffin-embedded Human tonsil tissue using 213070 (Anti-STOML1 Antibody) at a dilution of 1/200.



In comparison with the IHC on the left, the same paraffin-embedded Human tonsil tissue is first treated with fusion protein and then with D126578 (Anti-STOML1 Antibody) at dilution 1/200.