

STOML2 RABBIT PAB

Cat.#: S218659

Product Name: Anti-STOML2 Rabbit Polyclonal Antibody

Synonyms: SLP-2; HSPC108

UNIPROT ID: Q9UJZ1 (Gene Accession - BC002442)

Background: Stomatin-like protein 2 (STOML2), SLP-2 or EPB72-like 2, is a 356 amino acid member of the mec-2 family of proteins. Expressed ubiquitously at low levels, STOML2 is highly expressed in heart, liver and pancreas. STOML2 is localized to the cytoplasm with some distribution on the membrane. STOML2 was first identified as an overexpressed protein in human endometrial adenocarcinoma. Changes in cell growth in samples with different levels of STOML2 indicate that STOML2 could play a role in endometrial tumorigenesis. STOML2 is also thought to play a role in regulating ion channel conductances or the organization of sphingolipid and cholesterol-rich lipid rafts.

Immunogen: Fusion protein of human STOML2

Applications: ELISA, WB, IHC

Recommended Dilutions: IHC: 20-100;WB: 500-2000;ELISA: 5000-10000

Host Species: Rabbit

Clonality: Rabbit Polyclonal

Isotype: Immunogen-specific rabbit IgG

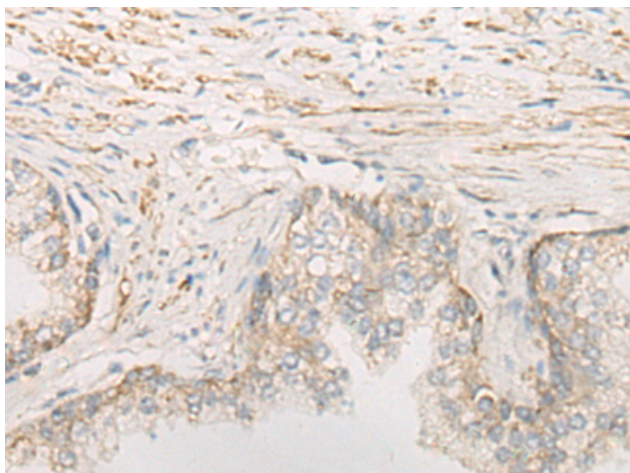
Purification: Antigen affinity purification

Species Reactivity: Human, Mouse, Rat

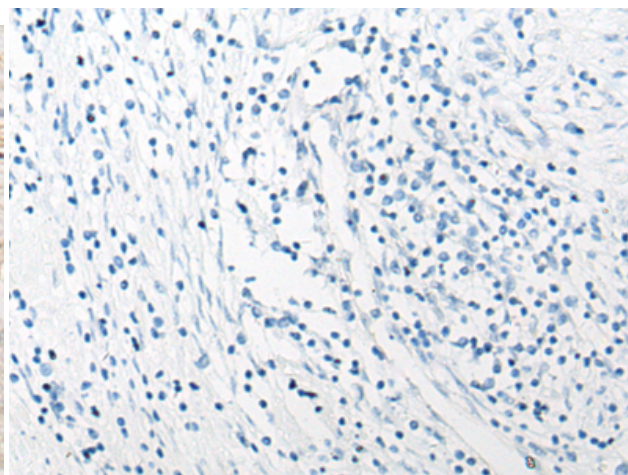
Constituents: PBS (without Mg²⁺ and Ca²⁺), pH 7.4, 150 mM NaCl, 0.05% Sodium Azide and 40% glycerol

Research Areas: Cancer

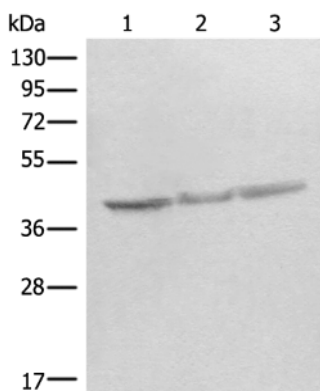
Storage & Shipping: Store at -20°C. Avoid repeated freezing and thawing



Immunohistochemistry analysis of paraffin embedded Human prostate cancer tissue using 218659 (STOML2 Antibody) at a dilution of 1/25 (Cytoplasm).



In comparison with the IHC on the left, the same paraffin-embedded Human prostate cancer tissue is first treated with the fusion protein and then with 218659 (Anti-STOML2 Antibody) at dilution 1/25.



Gel: 8% SDS-PAGE, Lysate: 40 μ g;
Lane 1-3: Mouse brain tissue, Rat heart tissue, Rat brain tissue lysates;
Primary antibody: 218659 (STOML2 Antibody) at dilution 1/350;
Secondary antibody: Goat anti rabbit IgG at 1/8000 dilution;
Exposure time: 5 seconds