

STS RABBIT PAB

Cat.#: S220974

Product Name: Anti-STS Rabbit Polyclonal Antibody

Synonyms: ES; ASC; XLI; ARSC; SSDD; ARSC1

UNIPROT ID: P08842 (Gene Accession - NP_000342)

Background: This gene encodes a multi-pass membrane protein that is localized to the endoplasmic reticulum. It belongs to the sulfatase family and hydrolyzes several 3-beta-hydroxysteroid sulfates, which serve as metabolic precursors for estrogens, androgens, and cholesterol. Mutations in this gene are associated with X-linked ichthyosis (XLI). Alternatively spliced transcript variants resulting from the use of different promoters have been described for this gene.

Immunogen: Synthetic peptide of human STS

Applications: ELISA, WB, IHC

Recommended Dilutions: IHC: Oct-50;WB: 200-1000;ELISA: 5000-10000

Host Species: Rabbit

Clonality: Rabbit Polyclonal

Isotype: Immunogen-specific rabbit IgG

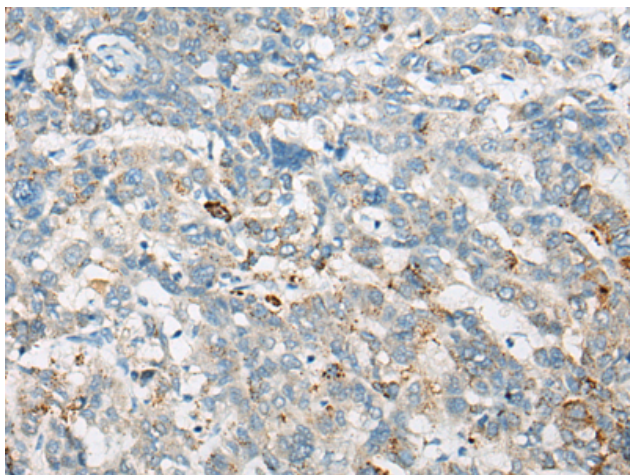
Purification: Antigen affinity purification

Species Reactivity: Human

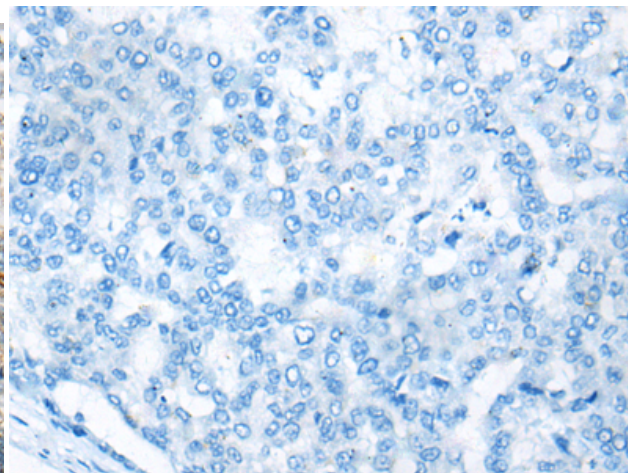
Constituents: PBS (without Mg²⁺ and Ca²⁺), pH 7.4, 150 mM NaCl, 0.05% Sodium Azide and 40% glycerol

Research Areas: Signal Transduction, Cancer

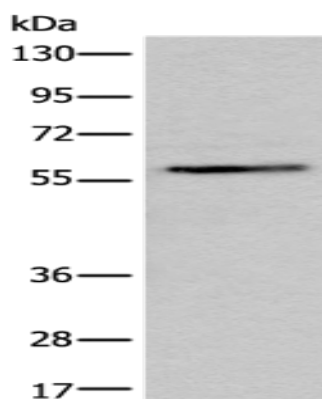
Storage & Shipping: Store at -20°C. Avoid repeated freezing and thawing



Immunohistochemistry analysis of paraffin embedded Human liver cancer tissue using 220974(STS Antibody) at a dilution of 1/35(Cytoplasm).



In comparison with the IHC on the left, the same paraffin-embedded Human liver cancer tissue is first treated with the synthetic peptide and then with 220974(Anti-STS Antibody) at dilution 1/35.



Gel: 8%SDS-PAGE, Lysate: 40 μ g;
Lane: HeLa cell lysate;
Primary antibody: 220974(STS Antibody) at dilution 1/300;
Secondary antibody: Goat anti rabbit IgG at 1/8000 dilution;
Exposure time: 5 minutes