

STUB1 RABBIT MAB

Cat.#: N262951

Product Name: Anti-STUB1 Rabbit Monoclonal Antibody

Synonyms: STUB1; CHIP; HSPABP2; NY-CO-7; SDCCAG7; UBOX1

UNIPROT ID: Q9UNE7

Background: E3 ubiquitin-protein ligase which targets misfolded chaperone substrates towards proteasomal degradation. Ubiquitinates NOS1 in concert with Hsp70 and Hsp40. Modulates the activity of several chaperone complexes, including Hsp70, Hsc70 and Hsp90.

Immunogen: A synthetic peptide of human STUB1

Applications: WB, ICC/IF, IP

Recommended Dilutions: WB: 1/500-1/1000 IF: 1/50-1/200 IP: 1/20

Host Species: Rabbit

Clonality: Rabbit Monoclonal

Clone ID: R05-5F5

MW: Calculated MW: 35 kDa; Observed MW: 35 kDa

Isotype: IgG

Purification: Affinity Purified

Species Reactivity: Human, Mouse, Rat

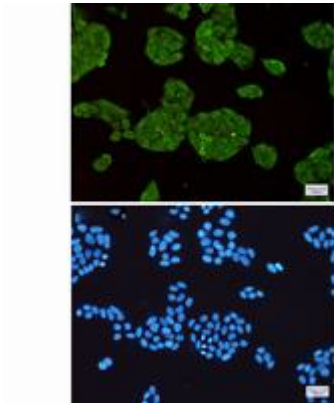
Conjugation: Unconjugated

Modification: Unmodified

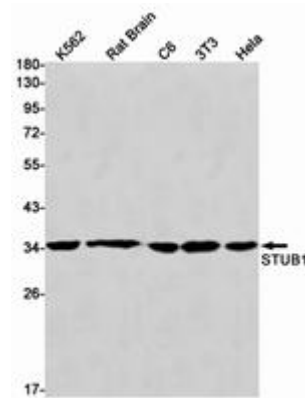
Constituents: PBS (without Mg²⁺ and Ca²⁺), pH 7.3 containing 50% glycerol, 0.5% BSA and 0.02% sodium azide

Research Areas: Signal Transduction

Storage & Shipping: Store at -20°C. Avoid repeated freezing and thawing



Immunocytochemistry analysis of STUB1 (green) in HeLa using STUB1 antibody, and DAPI (blue)



Western blot analysis of STUB1 in K562, rat Brain, C6, 3T3, HeLa lysates using STUB1 antibody.