

## STUB1 RABBIT MAB

**Cat.#:** N262950

**Product Name:** Anti-STUB1 Rabbit Monoclonal Antibody

**Synonyms:** STUB1; CHIP; HSPABP2; NY-CO-7; SDCCAG7; UBOX1

**UNIPROT ID:** Q9UNE7

**Background:** E3 ubiquitin-protein ligase which targets misfolded chaperone substrates towards proteasomal degradation. Ubiquitinates NOS1 in concert with Hsp70 and Hsp40. Modulates the activity of several chaperone complexes, including Hsp70, Hsc70 and Hsp90.

**Immunogen:** A synthetic peptide of human STUB1

**Applications:** WB, ICC/IF, IP

**Recommended Dilutions:** WB: 1/500-1/1000 IF: 1/50-1/200 IP: 1/20

**Host Species:** Rabbit

**Clonality:** Rabbit Monoclonal

**Clone ID:** R01-8H5

**MW:** Calculated MW: 35 kDa; Observed MW: 35 kDa

**Isotype:** IgG

**Purification:** Affinity Purified

**Species Reactivity:** Human, Mouse, Rat

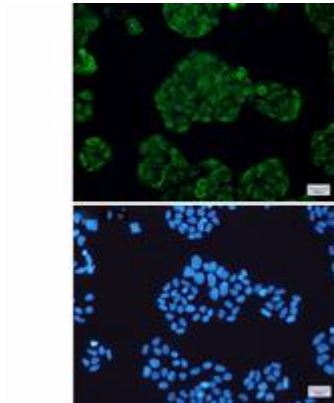
**Conjugation:** Unconjugated

**Modification:** Unmodified

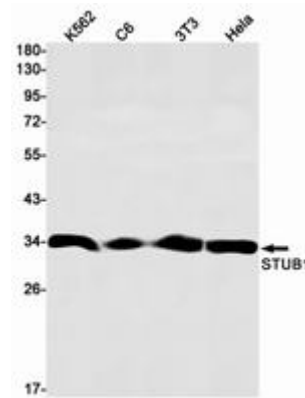
**Constituents:** PBS (without Mg<sup>2+</sup> and Ca<sup>2+</sup>), pH 7.3 containing 50% glycerol, 0.5% BSA and 0.02% sodium azide

**Research Areas:** Signal Transduction

**Storage & Shipping:** Store at -20°C. Avoid repeated freezing and thawing



Immunocytochemistry analysis of STUB1 (green) in HeLa using STUB1 antibody, and DAPI (blue)



Western blot analysis of STUB1 in K562, C6, 3T3, HeLa lysates using STUB1 antibody.