

## STX19 RABBIT PAB

**Cat.#:** S217876

**Product Name:** Anti-STX19 Rabbit Polyclonal Antibody

**Synonyms:**

**UNIPROT ID:** Q8N4C7 (Gene Accession - BC034696 )

**Background:** Syntaxin 19, also known as STX19, is a 294 amino acid peripheral membrane protein that contains one t-SNARE coiled-coil homology domain and belongs to the syntaxin family, suggesting a role in synaptic vesicle fusion. The gene encoding Syntaxin 19 maps to human chromosome 3, which houses over 1,100 genes, including a chemokine receptor (CKR) gene cluster and a variety of human cancer-related gene loci.

**Immunogen:** Full length fusion protein

**Applications:** ELISA, WB, IHC

**Recommended Dilutions:** IHC: 25-100;WB: 500-2000;ELISA: 2000-5000

**Host Species:** Rabbit

**Clonality:** Rabbit Polyclonal

**Isotype:** Immunogen-specific rabbit IgG

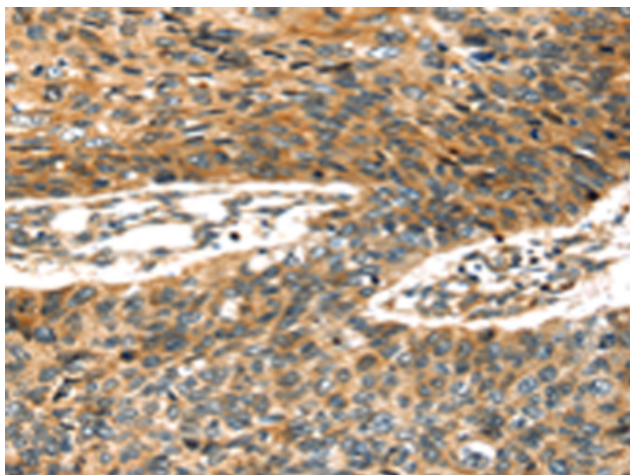
**Purification:** Antigen affinity purification

**Species Reactivity:** Human, Mouse

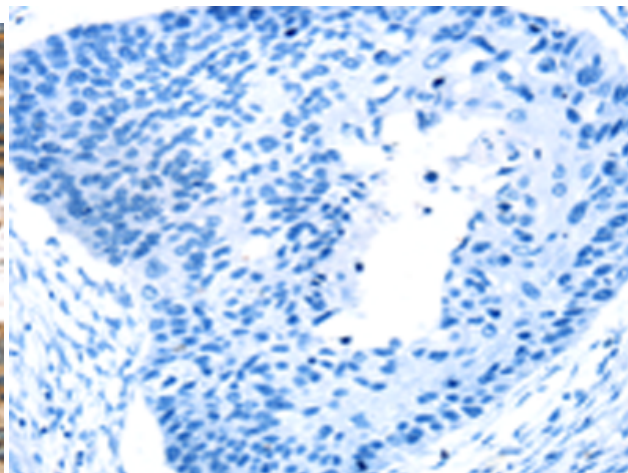
**Constituents:** PBS (without Mg<sup>2+</sup> and Ca<sup>2+</sup>), pH 7.4, 150 mM NaCl, 0.05% Sodium Azide and 40% glycerol

**Research Areas:** Signal Transduction

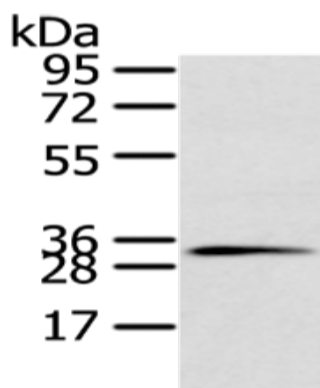
**Storage & Shipping:** Store at -20°C. Avoid repeated freezing and thawing



Immunohistochemistry analysis of paraffin embedded Human esophagus cancer tissue using 217876 (STX19 Antibody) at a dilution of 1/35 (Cytoplasm).



In comparison with the IHC on the left, the same paraffin-embedded Human esophagus cancer tissue is first treated with the fusion protein and then with 217876 (Anti-STX19 Antibody) at dilution 1/35.



Gel: 10% SDS-PAGE, Lysate: 80  $\mu$ g;  
Lane: 231 cell;  
Primary antibody: 217876 (STX19 Antibody) at dilution 1/800;  
Secondary antibody: Goat anti rabbit IgG at 1/8000 dilution;  
Exposure time: 10 seconds