

STX3 RABBIT PAB

Cat.#: S214767

Product Name: Anti-STX3 Rabbit Polyclonal Antibody

Synonyms: STX3A

UNIPROT ID: Q13277 (Gene Accession - NP_004168)

Background: The gene is a member of the syntaxin family. The encoded protein is targeted to the apical membrane of epithelial cells where it forms clusters and is important in establishing and maintaining polarity necessary for protein trafficking involving vesicle fusion and exocytosis. Alternative splicing results in multiple transcript variants.

Immunogen: Synthetic peptide of human STX3

Applications: ELISA, WB, IHC

Recommended Dilutions: IHC: 35-150;WB: 500-2000;ELISA: 2000-5000

Host Species: Rabbit

Clonality: Rabbit Polyclonal

Isotype: Immunogen-specific rabbit IgG

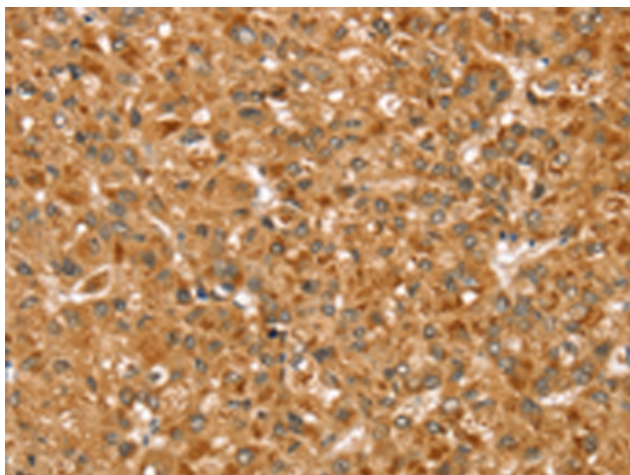
Purification: Antigen affinity purification

Species Reactivity: Human, Mouse, Rat

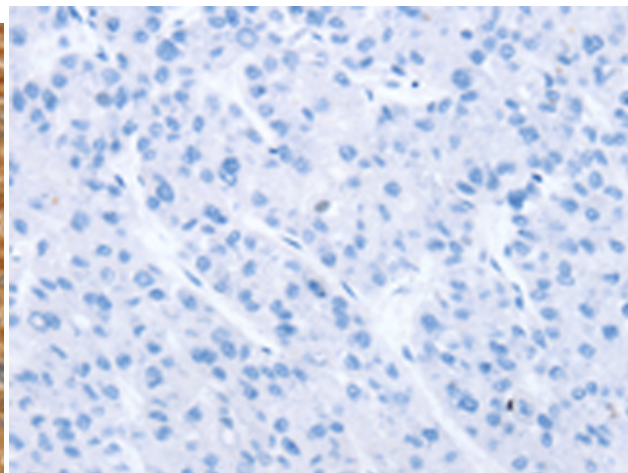
Constituents: PBS (without Mg²⁺ and Ca²⁺), pH 7.4, 150 mM NaCl, 0.05% Sodium Azide and 40% glycerol

Research Areas: Neuroscience

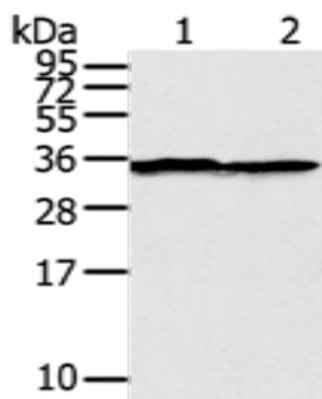
Storage & Shipping: Store at -20°C. Avoid repeated freezing and thawing



Immunohistochemistry analysis of paraffin embedded Human liver cancer tissue using 214767(STX3 Antibody) at a dilution of 1/35(Cytoplasm).



In comparison with the IHC on the left, the same paraffin-embedded Human liver cancer tissue is first treated with the synthetic peptide and then with 214767(Anti-STX3 Antibody) at dilution 1/35.



Gel: 8%SDS-PAGE, Lysate: 40 µg;
Lane: A375 cells;
Primary antibody: 214767(STX3 Antibody) at dilution 1/400;
Secondary antibody: Goat anti rabbit IgG at 1/8000 dilution;
Exposure time: 10 seconds