

STXBP2 RABBIT PAB

Cat.#: S216879

Product Name: Anti-STXBP2 Rabbit Polyclonal Antibody

Synonyms: FHL5; UNC18B; Hunc18b; UNC18-2; pp10122; MUNC18-2

UNIPROT ID: Q15833 (Gene Accession - BC002869)

Background: This gene encodes a member of the STXBP/unc-18/SEC1 family. The encoded protein is involved in intracellular trafficking, control of SNARE (soluble NSF attachment protein receptor) complex assembly, and the release of cytotoxic granules by natural killer cells. Mutations in this gene are associated with familial hemophagocytic lymphohistiocytosis. Alternatively spliced transcript variants encoding different isoforms have been noted for this gene.

Immunogen: Fusion protein of human STXBP2

Applications: ELISA, WB, IHC

Recommended Dilutions: IHC: 25-100;WB: 200-1000;ELISA: 1000-2000

Host Species: Rabbit

Clonality: Rabbit Polyclonal

Isotype: Immunogen-specific rabbit IgG

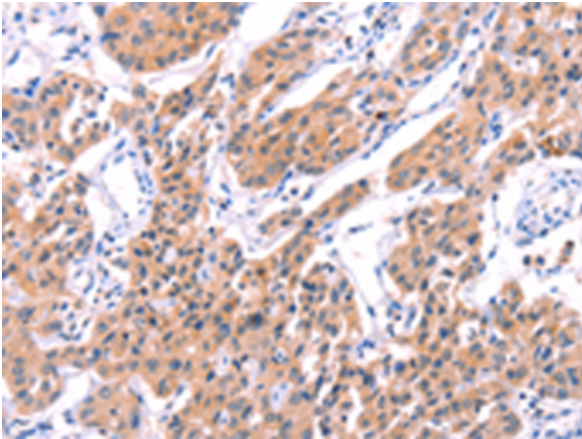
Purification: Antigen affinity purification

Species Reactivity: Human, Mouse, Rat

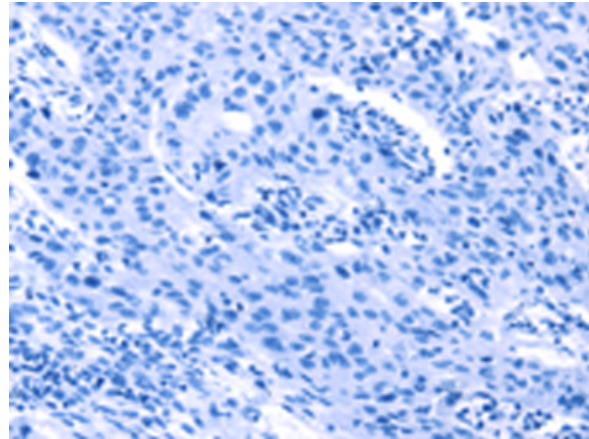
Constituents: PBS (without Mg²⁺ and Ca²⁺), pH 7.4, 150 mM NaCl, 0.05% Sodium Azide and 40% glycerol

Research Areas: Signal Transduction

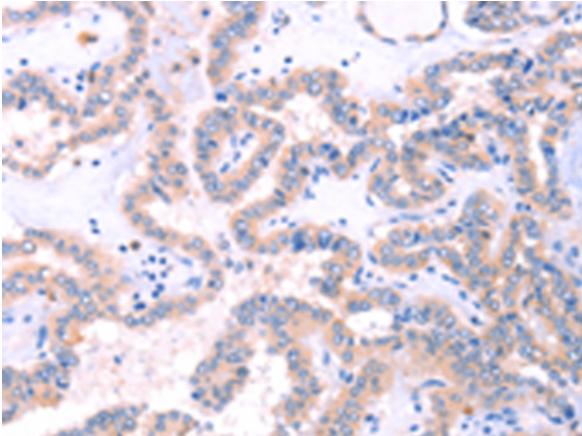
Storage & Shipping: Store at -20°C. Avoid repeated freezing and thawing



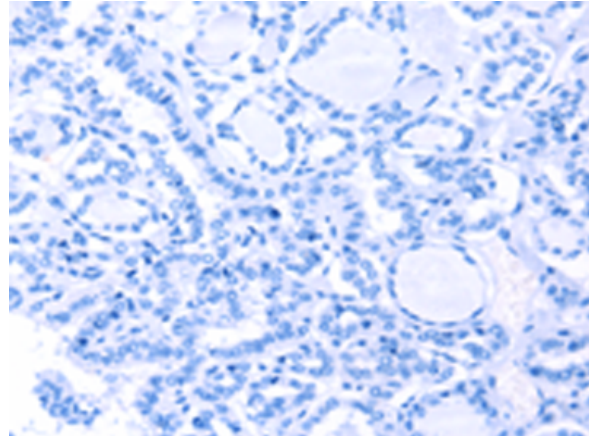
Immunohistochemistry analysis of paraffin embedded Human lung cancer tissue using 216879(STXBP2 Antibody) at a dilution of 1/20(Cytoplasm).



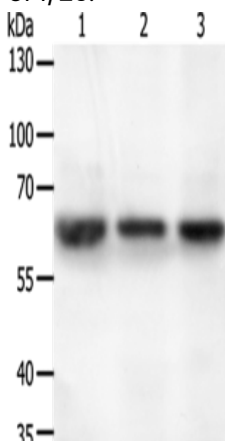
In comparison with the IHC on the left, the same paraffin-embedded Human lung cancer tissue is first treated with the fusion protein and then with 216879(Anti-STXBP2 Antibody) at dilution 1/20.



The image on the left is immunohistochemistry of paraffin-embedded Human thyroid cancer tissue using 216879(Anti-STXBP2 Antibody) at a dilution of 1/20.



In comparison with the IHC on the left, the same paraffin-embedded Human thyroid cancer tissue is first treated with fusion protein and then with D221402(Anti-STXBP2 Antibody) at dilution 1/20.



Gel: 10%SDS-PAGE, Lysate: 50 µg;
 Lane 1-3: A549 cells, human liver cancer tissue, Hela cells;
 Primary antibody: 216879(STXBP2 Antibody) at dilution 1/200;
 Secondary antibody: Goat anti rabbit IgG at 1/8000 dilution;
 Exposure time: 40 seconds



Product Description

Pioneering GTPase and Oncogene Product Development since 2010
