

SUCLG2 RABBIT PAB

Cat.#: S219596

Product Name: Anti-SUCLG2 Rabbit Polyclonal Antibody

Synonyms: G-SCS; GBETA; GTPSCS

UNIPROT ID: Q96I99 (Gene Accession - BC047024)

Background: This gene encodes a GTP-specific beta subunit of succinyl-CoA synthetase. Succinyl-CoA synthetase catalyzes the reversible reaction involving the formation of succinyl-CoA and succinate. Alternate splicing results in multiple transcript variants. Pseudogenes of this gene are found on chromosomes 5 and 12.

Immunogen: Fusion protein of human SUCLG2

Applications: ELISA, IHC

Recommended Dilutions: IHC: 50-200; ELISA: 5000-10000

Host Species: Rabbit

Clonality: Rabbit Polyclonal

Isotype: Immunogen-specific rabbit IgG

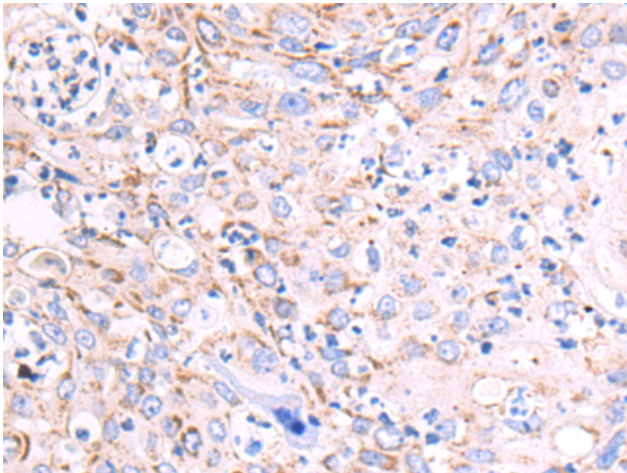
Purification: Antigen affinity purification

Species Reactivity: Human, Mouse

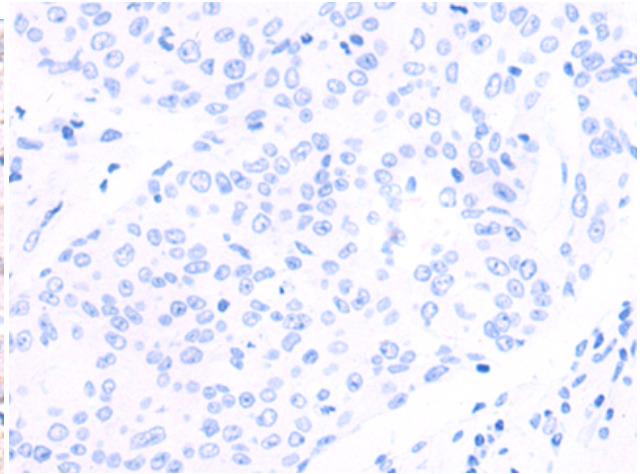
Constituents: PBS (without Mg²⁺ and Ca²⁺), pH 7.4, 150 mM NaCl, 0.05% Sodium Azide and 40% glycerol

Research Areas: Signal Transduction, Metabolism

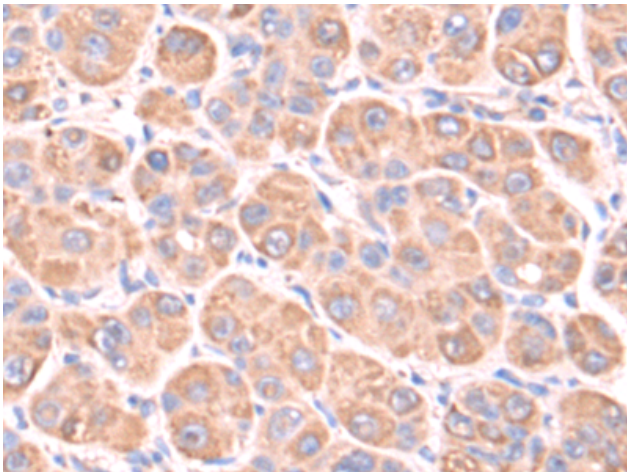
Storage & Shipping: Store at -20°C. Avoid repeated freezing and thawing



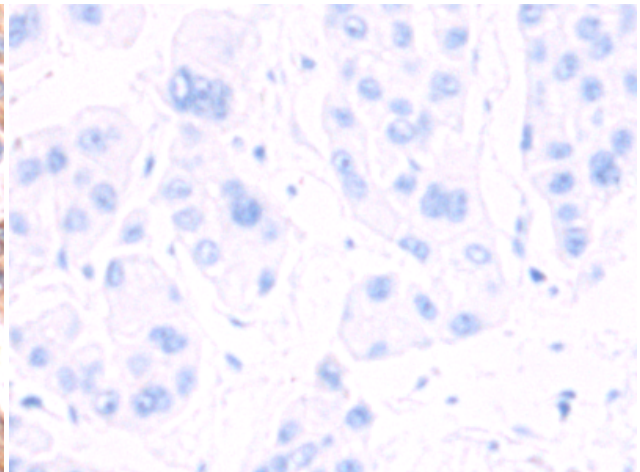
Immunohistochemistry analysis of paraffin embedded Human liver cancer tissue using 219596(SUCLG2 Antibody) at a dilution of 1/80(Cytoplasm).



In comparison with the IHC on the left, the same paraffin-embedded Human liver cancer tissue is first treated with the fusion protein and then with 219596(Anti-SUCLG2 Antibody) at dilution 1/80.



The image on the left is immunohistochemistry of paraffin-embedded Human bladder cancer tissue using 219596(Anti-SUCLG2 Antibody) at a dilution of 1/80.



In comparison with the IHC on the left, the same paraffin-embedded Human bladder cancer tissue is first treated with fusion protein and then with D227877(Anti-SUCLG2 Antibody) at dilution 1/80.