

SULT2A1 RABBIT PAB

Cat.#: S217863

Product Name: Anti-SULT2A1 Rabbit Polyclonal Antibody

Synonyms: HST; ST2; STD; hST α ; DHEAS; ST2A1; ST2A3; DHEA-ST

UNIPROT ID: Q06520 (Gene Accession - BC020755)

Background: This gene encodes a member of the sulfotransferase family. Sulfotransferases aid in the metabolism of drugs and endogenous compounds by converting these substances into more hydrophilic water-soluble sulfate conjugates that can be easily excreted. This protein catalyzes the sulfation of steroids and bile acids in the liver and adrenal glands, and may have a role in the inherited adrenal androgen excess in women with polycystic ovary syndrome.

Immunogen: Fusion protein of human SULT2A1

Applications: ELISA, WB, IHC

Recommended Dilutions: IHC: 25-100;WB: 500-2000;ELISA: 2000-5000

Host Species: Rabbit

Clonality: Rabbit Polyclonal

Isotype: Immunogen-specific rabbit IgG

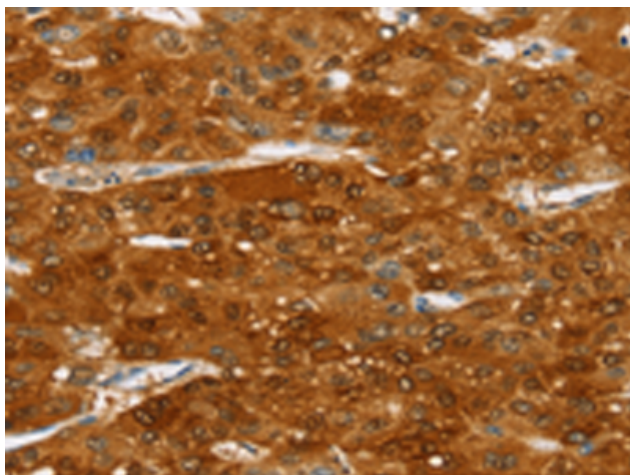
Purification: Antigen affinity purification

Species Reactivity: Human

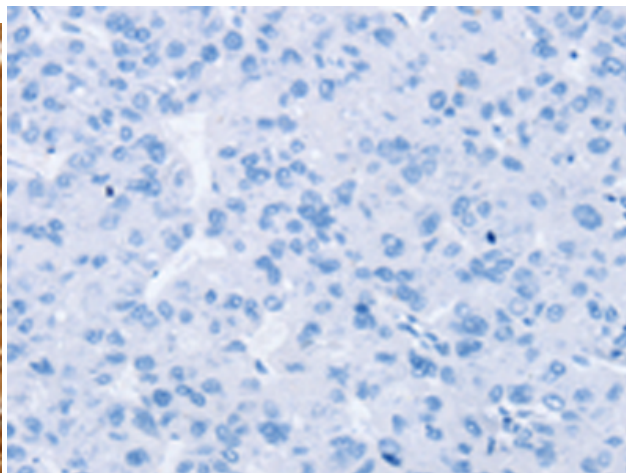
Constituents: PBS (without Mg²⁺ and Ca²⁺), pH 7.4, 150 mM NaCl, 0.05% Sodium Azide and 40% glycerol

Research Areas: Metabolism, Cancer

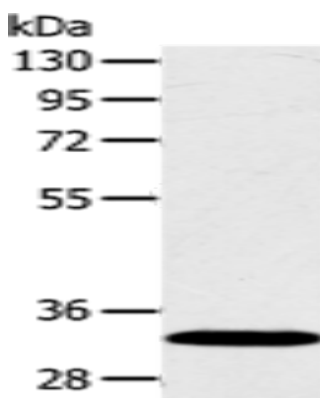
Storage & Shipping: Store at -20°C. Avoid repeated freezing and thawing



Immunohistochemistry analysis of paraffin embedded Human liver cancer tissue using 217863(SULT2A1 Antibody) at a dilution of 1/20(Cytoplasm and Nucleus).



In comparison with the IHC on the left, the same paraffin-embedded Human liver cancer tissue is first treated with the fusion protein and then with 217863(Anti-SULT2A1 Antibody) at dilution 1/20.



Gel: 8%SDS-PAGE, Lysate: 40 μ g;
Lane: Human fetal liver tissue;
Primary antibody: 217863(SULT2A1 Antibody)
at dilution 1/650;
Secondary antibody: Goat anti rabbit IgG at
1/8000 dilution;
Exposure time: 1 second