

SULT4A1 RABBIT PAB

Cat.#: S219037

Product Name: Anti-SULT4A1 Rabbit Polyclonal Antibody

Synonyms: NST; BRSTL1; SULTX3; BR-STL-1; DJ388M5.3; hBR-STL-1

UNIPROT ID: Q9BR01 (Gene Accession - BC028171)

Background: This gene encodes a member of the sulfotransferase family. The encoded protein is a brain-specific sulfotransferase believed to be involved in the metabolism of neurotransmitters. Polymorphisms in this gene may be associated with susceptibility to schizophrenia.

Immunogen: Fusion protein of human SULT4A1

Applications: ELISA, IHC

Recommended Dilutions: IHC: 50-300; ELISA: 5000-10000

Host Species: Rabbit

Clonality: Rabbit Polyclonal

Isotype: Immunogen-specific rabbit IgG

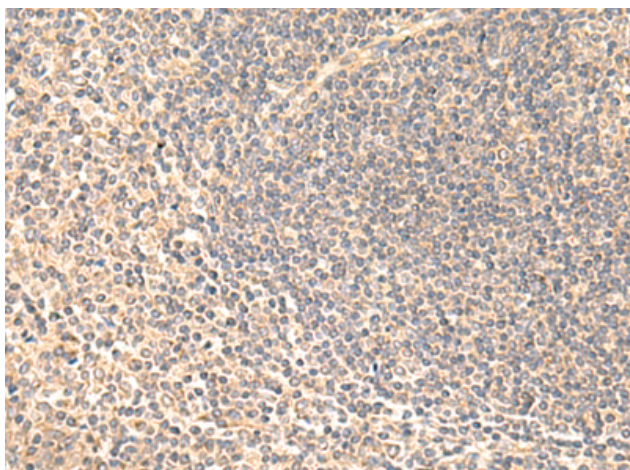
Purification: Antigen affinity purification

Species Reactivity: Human, Mouse, Rat

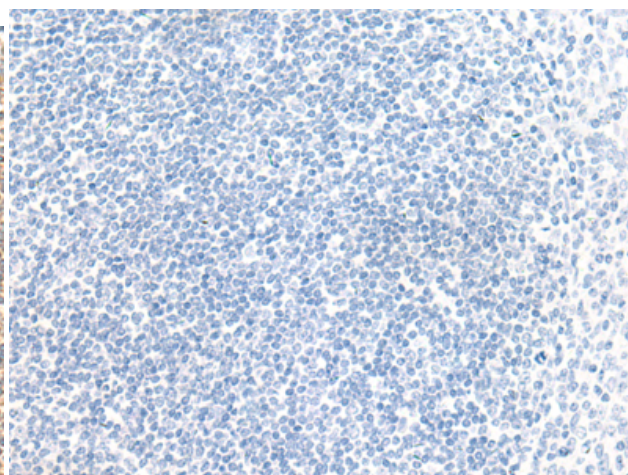
Constituents: PBS (without Mg²⁺ and Ca²⁺), pH 7.4, 150 mM NaCl, 0.05% Sodium Azide and 40% glycerol

Research Areas: Metabolism, Neuroscience

Storage & Shipping: Store at -20°C. Avoid repeated freezing and thawing



Immunohistochemistry analysis of paraffin embedded Human tonsil tissue using 219037(SULT4A1 Antibody) at a dilution of 1/65(Cytoplasm).



In comparison with the IHC on the left, the same paraffin-embedded Human tonsil tissue is first treated with the fusion protein and then with 219037(Anti-SULT4A1 Antibody) at dilution 1/65.