

SUMO1 RABBIT PAB

Cat.#: S213988

Product Name: Anti-SUMO1 Rabbit Polyclonal Antibody

Synonyms: DAPI; GMP1; PIC1; SMT3; UBL1; OFC10; SENP2; SMT3C; SMT3H3

UNIPROT ID: P63165 (Gene Accession - NP_001005781)

Background: This gene encodes a protein that is a member of the SUMO (small ubiquitin-like modifier) protein family. It functions in a manner similar to ubiquitin in that it is bound to target proteins as part of a post-translational modification system. However, unlike ubiquitin which targets proteins for degradation, this protein is involved in a variety of cellular processes, such as nuclear transport, transcriptional regulation, apoptosis, and protein stability. It is not active until the last four amino acids of the carboxy-terminus have been cleaved off. Several pseudogenes have been reported for this gene. Alternate transcriptional splice variants encoding different isoforms have been characterized.

Immunogen: Synthetic peptide of human SUMO1

Applications: ELISA, IHC

Recommended Dilutions: IHC: 50-200; ELISA: 3000-10000

Host Species: Rabbit

Clonality: Rabbit Polyclonal

Isotype: Immunogen-specific rabbit IgG

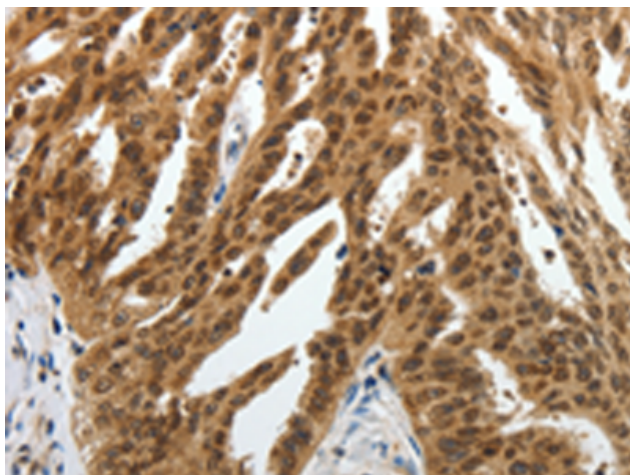
Purification: Antigen affinity purification

Species Reactivity: Human, Mouse, Rat

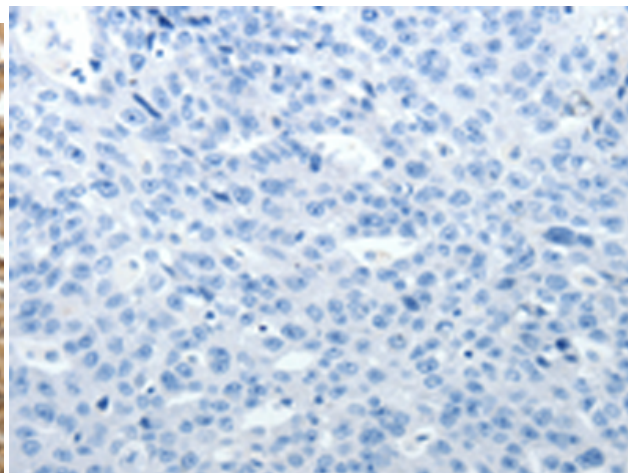
Constituents: PBS (without Mg²⁺ and Ca²⁺), pH 7.4, 150 mM NaCl, 0.05% Sodium Azide and 40% glycerol

Research Areas: Cancer, Cell Biology, Cardiovascular

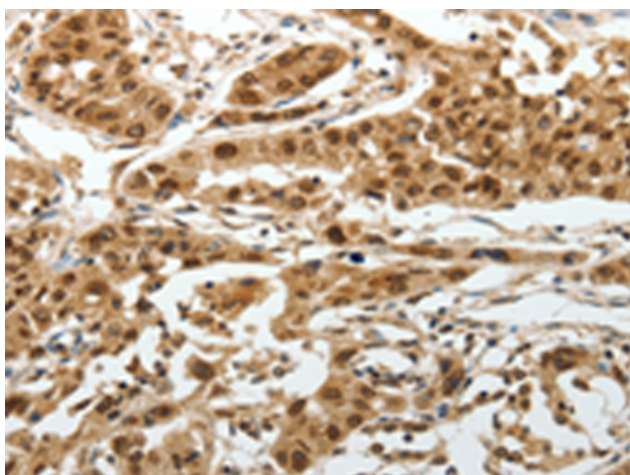
Storage & Shipping: Store at -20°C. Avoid repeated freezing and thawing



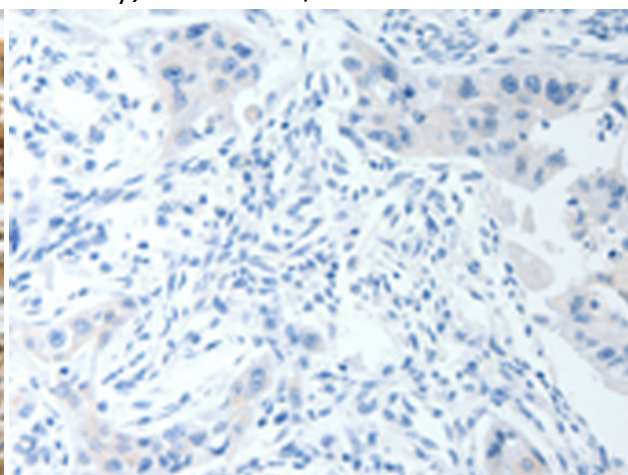
Immunohistochemistry analysis of paraffin embedded Human ovarian cancer tissue using 213988(SUMO1 Antibody) at a dilution of 1/30(Nucleus, Cytoplasm).



In comparison with the IHC on the left, the same paraffin-embedded Human ovarian cancer tissue is first treated with the synthetic peptide and then with 213988(Anti-SUMO1 Antibody) at dilution 1/30.



The image on the left is immunohistochemistry of paraffin-embedded Human lung cancer tissue using 213988(Anti-SUMO1 Antibody) at a dilution of 1/30.



In comparison with the IHC on the left, the same paraffin-embedded Human lung cancer tissue is first treated with synthetic peptide and then with D161155(Anti-SUMO1 Antibody) at dilution 1/30.