

SUN5 RABBIT PAB

Cat.#: S221554

Product Name: Anti-SUN5 Rabbit Polyclonal Antibody

Synonyms: SPAG4L; SPGF16; TSARG4; dJ726C3.1

UNIPROT ID: Q8TC36 (Gene Accession - NP_542406)

Background: The protein encoded by this gene appears to play a role in the meiotic stage of spermatogenesis. The encoded protein localizes to the junction between the sperm head and body and may be involved in nuclear envelope reconstitution and nuclear migration. Mutations in this gene have been implicated in acephalic spermatozoa syndrome.

Immunogen: Synthetic peptide of human SUN5

Applications: ELISA, WB, IHC

Recommended Dilutions: IHC: 50-100;WB: 500-2000;ELISA: 1000-2000

Host Species: Rabbit

Clonality: Rabbit Polyclonal

Isotype: Immunogen-specific rabbit IgG

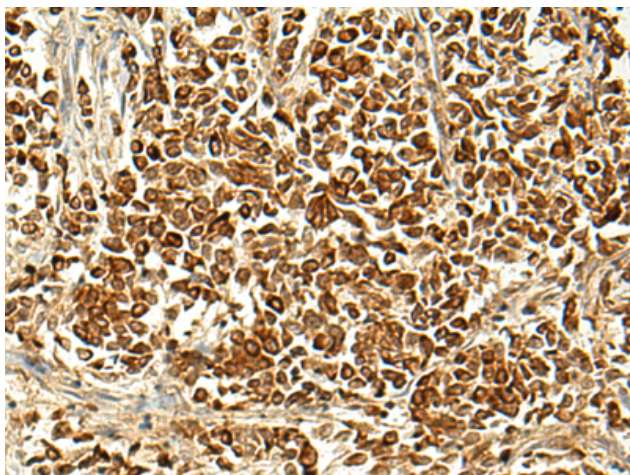
Purification: Antigen affinity purification

Species Reactivity: Human, Mouse

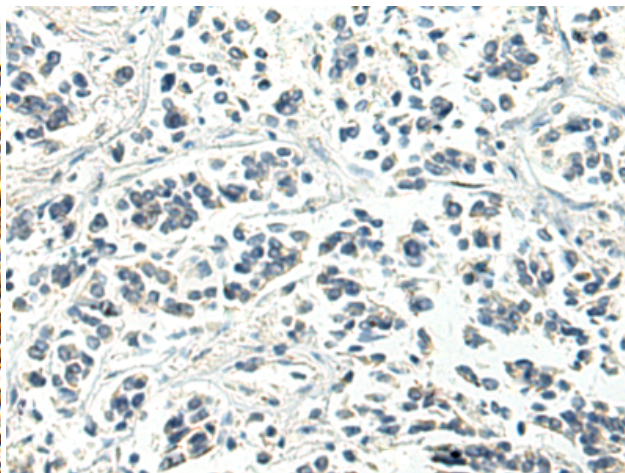
Constituents: PBS (without Mg²⁺ and Ca²⁺), pH 7.4, 150 mM NaCl, 0.05% Sodium Azide and 40% glycerol

Research Areas: Cell Biology

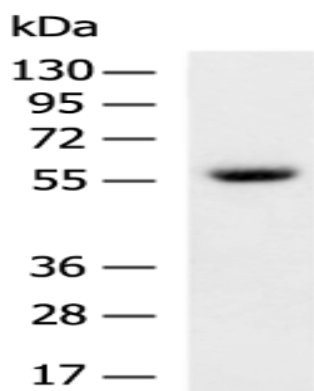
Storage & Shipping: Store at -20°C. Avoid repeated freezing and thawing



Immunohistochemistry analysis of paraffin embedded Human breast cancer tissue using 221554(SUN5 Antibody) at a dilution of 1/25(Nucleus).



In comparison with the IHC on the left, the same paraffin-embedded Human breast cancer tissue is first treated with the synthetic peptide and then with 221554(Anti-SUN5 Antibody) at dilution 1/25.



Gel: 8%SDS-PAGE, Lysate: 40 μ g;
Lane: Human left kidney cancer tissue lysate;
Primary antibody: 221554(SUN5 Antibody) at dilution 1/250;
Secondary antibody: HRP-conjugated Goat anti rabbit IgG at 1/5000 dilution;
Exposure time: 3 minutes