

SUPEROXIDE DISMUTASE 1 RABBIT MAB

Cat.#: N263564

Product Name: Anti-Superoxide Dismutase 1 Rabbit Monoclonal Antibody

Synonyms: SOD1; Superoxide dismutase [Cu-Zn]; Superoxide dismutase 1; hSod1

UNIPROT ID: P00441

Background: SOD1, Cu/Zn superoxide dismutase, is a major antioxidant enzyme that catalyzes the conversion of superoxide anion to hydrogen peroxide and molecular oxygen. The mechanism by which mutant SOD1 induces the neurodegeneration observed in ALS is still unclear. Mutant SOD1 proteins become misfolded and consequently oligomerize into high molecular weight species that aggregate and end up in proteinaceous inclusions.

Immunogen: A synthetic peptide of human Superoxide Dismutase 1

Applications: WB,IHC-F,IHC-P,ICC/IF

Recommended Dilutions: WB: 1/500-1/1000 IHC: 1/50-1/100 IF: 1/50-1/200

Host Species: Rabbit

Clonality: Rabbit Monoclonal

Clone ID: R08-5A5

MW: Calculated MW: 16 kDa; Observed MW: 16 kDa

Isotype: IgG

Purification: Affinity Purified

Species Reactivity: Human,Rat

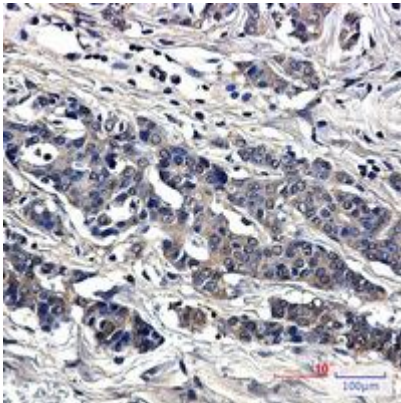
Conjugation: Unconjugated

Modification: Unmodified

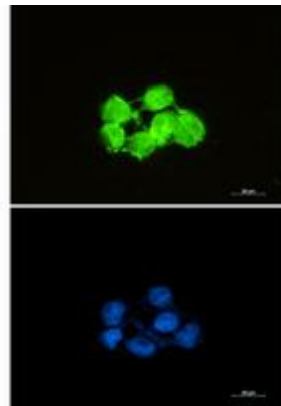
Constituents: PBS (without Mg²⁺ and Ca²⁺), pH 7.3 containing 50% glycerol, 0.5% BSA and 0.02% sodium azide

Research Areas: Signal Transduction

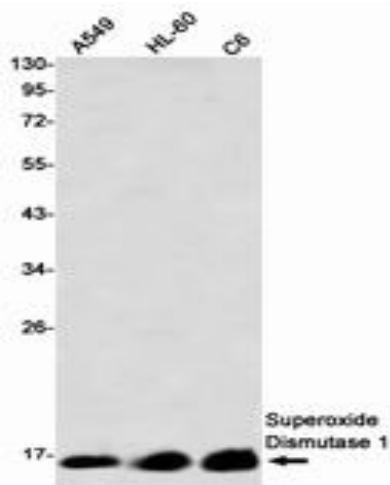
Storage & Shipping: Store at -20°C. Avoid repeated freezing and thawing



Immunohistochemistry analysis of paraffin-embedded Human breast cancer tissue using Superoxide Dismutase 1 antibody. High-pressure and temperature Sodium Citrate pH 6.0 was used for antigen retrieval.



Immunocytochemistry analysis of Superoxide Dismutase 1 (green) in HCT116 using Superoxide Dismutase 1 antibody, and DAPI (blue).



Western blot analysis of Superoxide Dismutase 1 in A549, HL-60, C6 lysates using Superoxide Dismutase 1 antibody.