

## SUPEROXIDE DISMUTASE 1 RABBIT MAB

**Cat.#:** N263565

**Product Name:** Anti-Superoxide Dismutase 1 Rabbit Monoclonal Antibody

**Synonyms:** SOD1; Superoxide dismutase [Cu-Zn]; Superoxide dismutase 1; hSod1

**UNIPROT ID:** P00441

**Background:** SOD1, Cu/Zn superoxide dismutase, is a major antioxidant enzyme that catalyzes the conversion of superoxide anion to hydrogen peroxide and molecular oxygen. The mechanism by which mutant SOD1 induces the neurodegeneration observed in ALS is still unclear. Mutant SOD1 proteins become misfolded and consequently oligomerize into high molecular weight species that aggregate and end up in proteinaceous inclusions.

**Immunogen:** Recombinant protein of human Superoxide Dismutase 1

**Applications:** WB,IHC-F,IHC-P,ICC/IF

**Recommended Dilutions:** WB: 1/500-1/1000 IHC: 1/50-1/100 IF: 1/50-1/200

**Host Species:** Rabbit

**Clonality:** Rabbit Monoclonal

**Clone ID:** R04-4C6

**MW:** Calculated MW: 16 kDa; Observed MW: 16 kDa

**Isotype:** IgG

**Purification:** Affinity Purified

**Species Reactivity:** Human

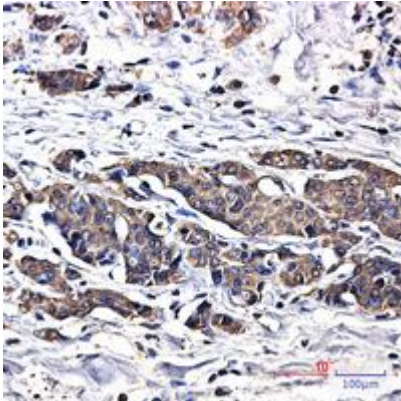
**Conjugation:** Unconjugated

**Modification:** Unmodified

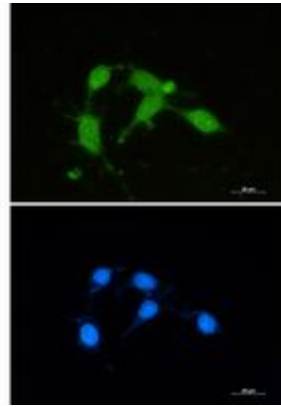
**Constituents:** PBS (without Mg<sup>2+</sup> and Ca<sup>2+</sup>), pH 7.3 containing 50% glycerol, 0.5% BSA and 0.02% sodium azide

**Research Areas:** Signal Transduction

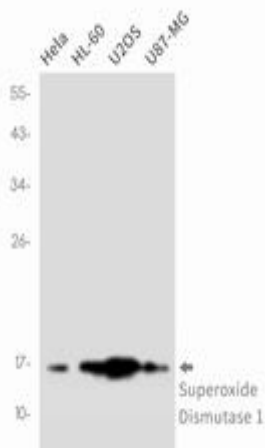
**Storage & Shipping:** Store at -20°C. Avoid repeated freezing and thawing



Immunohistochemistry analysis of paraffin-embedded Human breast cancer tissue using Superoxide Dismutase 1 antibody. High-pressure and temperature Sodium Citrate pH 6.0 was used for antigen retrieval.



Immunocytochemistry analysis of Superoxide Dismutase 1 (green) in HCT116 using Superoxide Dismutase 1 antibody, and DAPI (blue).



Western blot analysis of Superoxide Dismutase 1 in Hela, HL-60, U2OS, U87-MG lysates using Superoxide Dismutase 1 antibody.