

## SURF6 RABBIT PAB

**Cat.#:** S217865

**Product Name:** Anti-SURF6 Rabbit Polyclonal Antibody

**Synonyms:** RRP14

**UNIPROT ID:** O75683 (Gene Accession - BC014878 )

**Background:** This gene encodes a conserved protein that is localized to the nucleolus. The encoded protein may function as a nucleolar-matrix protein with nucleic acid-binding properties. There is a pseudogene for this gene on chromosome Y. Alternative splicing results in multiple transcript variants.

**Immunogen:** Fusion protein of human SURF6

**Applications:** ELISA, WB, IHC

**Recommended Dilutions:** IHC: 100-200;WB: 500-2000;ELISA: 5000-10000

**Host Species:** Rabbit

**Clonality:** Rabbit Polyclonal

**Isotype:** Immunogen-specific rabbit IgG

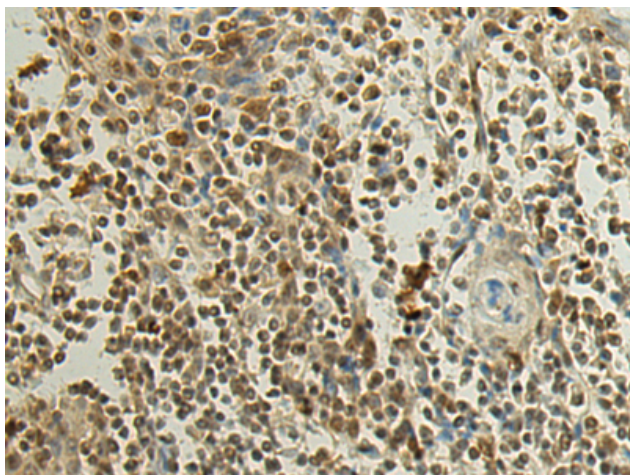
**Purification:** Antigen affinity purification

**Species Reactivity:** Human

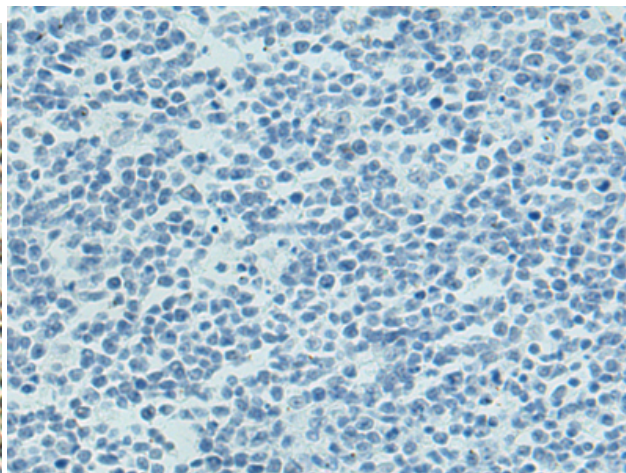
**Constituents:** PBS (without Mg<sup>2+</sup> and Ca<sup>2+</sup>), pH 7.4, 150 mM NaCl, 0.05% Sodium Azide and 40% glycerol

**Research Areas:** Epigenetics and Nuclear Signaling

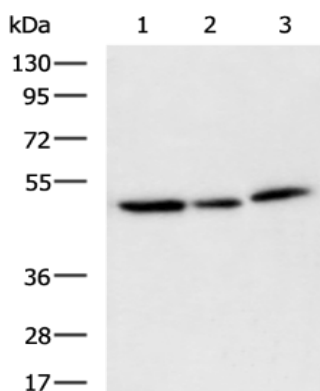
**Storage & Shipping:** Store at -20°C. Avoid repeated freezing and thawing



Immunohistochemistry analysis of paraffin embedded Human tonsil tissue using 217865(SURF6 Antibody) at a dilution of 1/120(Nucleus).



In comparison with the IHC on the left, the same paraffin-embedded Human tonsil tissue is first treated with the fusion protein and then with 217865(Anti-SURF6 Antibody) at dilution 1/120.



Gel: 8%SDS-PAGE, Lysate: 40 µg;  
Lane 1-3: HL-60, K562 and Hela cell lysates;  
Primary antibody: 217865(SURF6 Antibody) at dilution 1/700;  
Secondary antibody: HRP-conjugated Goat anti rabbit IgG at 1/5000 dilution;  
Exposure time: 10 seconds