

SUSD3 RABBIT PAB

Cat.#: S219293

Product Name: Anti-SUSD3 Rabbit Polyclonal Antibody

Synonyms:

UNIPROT ID: Q96L08 (Gene Accession - BC014601)

Background: May play a role in breast tumorigenesis by promoting estrogen-dependent cell proliferation, cell-cell interactions and migration.

Immunogen: Fusion protein of human SUSD3

Applications: ELISA, IHC

Recommended Dilutions: IHC: 100-200; ELISA: 5000-10000

Host Species: Rabbit

Clonality: Rabbit Polyclonal

Isotype: Immunogen-specific rabbit IgG

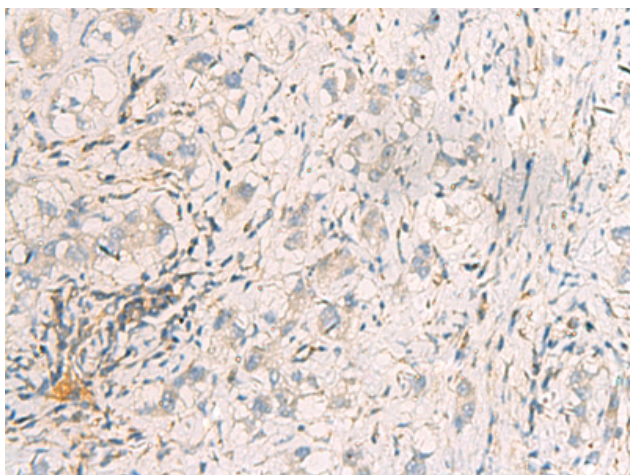
Purification: Antigen affinity purification

Species Reactivity: Human

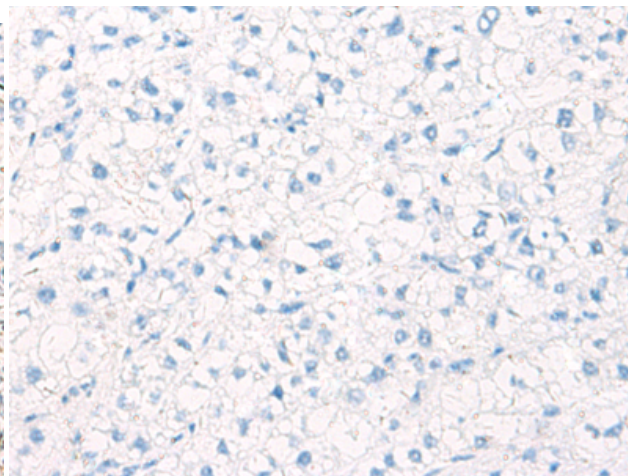
Constituents: PBS (without Mg²⁺ and Ca²⁺), pH 7.4, 150 mM NaCl, 0.05% Sodium Azide and 40% glycerol

Research Areas: Cell Biology

Storage & Shipping: Store at -20°C. Avoid repeated freezing and thawing



Immunohistochemistry analysis of paraffin embedded Human liver cancer tissue using 219293(SUSD3 Antibody) at a dilution of 1/95(Cell membrane).



In comparison with the IHC on the left, the same paraffin-embedded Human liver cancer tissue is first treated with the fusion protein and then with 219293(Anti-SUSD3 Antibody) at dilution 1/95.