

SV40 T ANTIGEN RABBIT MAB

Cat.#: N263567

Product Name: Anti-SV40 T Antigen Rabbit Monoclonal Antibody

Synonyms: Large T antigen; LT; LT-AG

UNIPROT ID: P03070

Background: Isoform large T antigen is a key early protein essential for both driving viral replication and inducing cellular transformation. Plays a role in viral genome replication by driving entry of quiescent cells into the cell cycle and by autoregulating the synthesis of viral early mRNA. Displays highly oncogenic activities by corrupting the host cellular checkpoint mechanisms that guard cell division and the transcription, replication, and repair of DNA.

Immunogen: A synthetic peptide of SV40 T-antigen

Applications: WB, ICC/IF, IP

Recommended Dilutions: WB: 1/500-1/1000 IF: 1/50-1/200 IP: 1/20

Host Species: Rabbit

Clonality: Rabbit Monoclonal

Clone ID: R08-7D4

MW: Calculated MW: 82 kDa; Observed MW: 90 kDa

Isotype: IgG

Purification: Affinity Purified

Species Reactivity: All

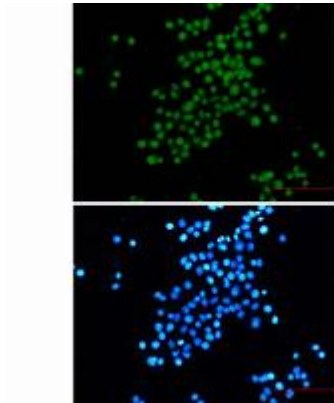
Conjugation: Unconjugated

Modification: Unmodified

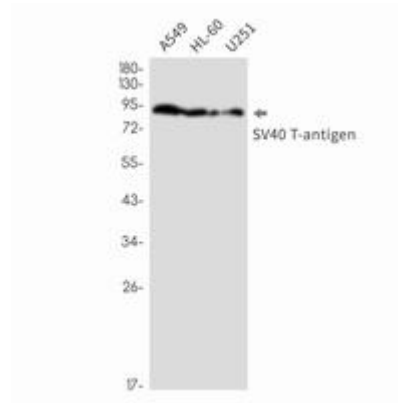
Constituents: PBS (without Mg²⁺ and Ca²⁺), pH 7.3 containing 50% glycerol, 0.5% BSA and 0.02% sodium azide

Research Areas: Infectious Diseases

Storage & Shipping: Store at -20°C. Avoid repeated freezing and thawing



Immunocytochemistry analysis of SV40 T antigen (green) in HeLa cells using SV40 T antigen antibody, and DAPI (blue)



Western blot analysis of SV40 T antigen in A549, HL-60, U251 cell lysates using SV40 T antigen antibody.