

## SYCP1 RABBIT PAB

**Cat.#:** S214654

**Product Name:** Anti-SYCP1 Rabbit Polyclonal Antibody

**Synonyms:** CT8; SCPI; SCP-1; HOM-TES-14

**UNIPROT ID:** Q15431 (Gene Accession - NP\_003167 )

**Background:** The synaptonemal complex protein 1 (SCP-1), also known as SYCP1(A), SYNI(I) and HOM-TES-14, is a protein product of human chromosome 1p13-p12. SCP-1 is a major component of the transverse filaments of synaptonemal complexes and functions by pairing homologous chromosomes during meiotic prophase in spermatocytes, which is an essential step for the generation of haploid cells in meiosis I. SCP-1 is expressed in the testis, adult brain, some malignant gliomas, breast, renal cell and ovarian cancer. SCP-1 is known to be selectively expressed during the meiotic prophase of spermatocytes and shows cell cycle phase-independent nuclear expression in cancer cells.

**Immunogen:** Synthetic peptide of human SYCP1

**Applications:** ELISA, IHC

**Recommended Dilutions:** IHC: 25-100; ELISA: 1000-2000

**Host Species:** Rabbit

**Clonality:** Rabbit Polyclonal

**Isotype:** Immunogen-specific rabbit IgG

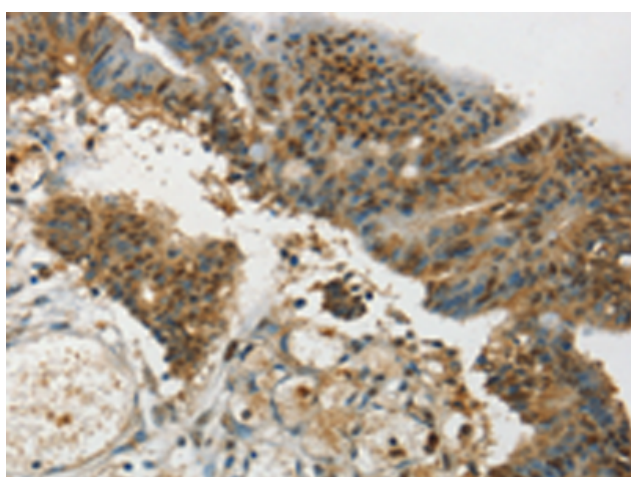
**Purification:** Antigen affinity purification

**Species Reactivity:** Human

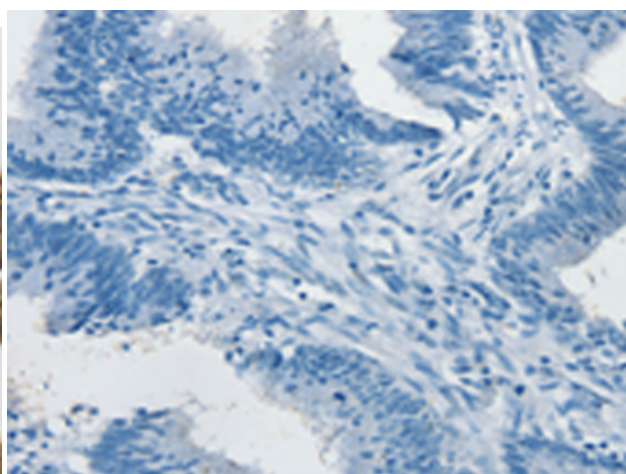
**Constituents:** PBS (without Mg<sup>2+</sup> and Ca<sup>2+</sup>), pH 7.4, 150 mM NaCl, 0.05% Sodium Azide and 40% glycerol

**Research Areas:** Epigenetics and Nuclear Signaling

**Storage & Shipping:** Store at -20°C. Avoid repeated freezing and thawing



Immunohistochemistry analysis of paraffin embedded Human colon cancer tissue using 214654(SYCP1 Antibody) at a dilution of 1/35(Nucleus).



In comparison with the IHC on the left, the same paraffin-embedded Human colon cancer tissue is first treated with the synthetic peptide and then with 214654(Anti-SYCP1 Antibody) at dilution 1/35.



# Product Description

Pioneering GTPase and Oncogene Product Development since 2010

---