

## SYCP3 RABBIT PAB

**Cat.#:** S220884

**Product Name:** Anti-SYCP3 Rabbit Polyclonal Antibody

**Synonyms:** COR1; SCP3; SPGF4; RPRGL4

**UNIPROT ID:** Q8IZU3 (Gene Accession - NP\_001171419 )

**Background:** This gene encodes an essential structural component of the synaptonemal complex. This complex is involved in synapsis, recombination and segregation of meiotic chromosomes. Mutations in this gene are associated with azoospermia in males and susceptibility to pregnancy loss in females. Alternate splicing results in multiple transcript variants that encode the same protein.

**Immunogen:** Synthetic peptide of human SYCP3

**Applications:** ELISA, WB, IHC

**Recommended Dilutions:** IHC: 50-100;WB: 500-2000;ELISA: 1000-2000

**Host Species:** Rabbit

**Clonality:** Rabbit Polyclonal

**Isotype:** Immunogen-specific rabbit IgG

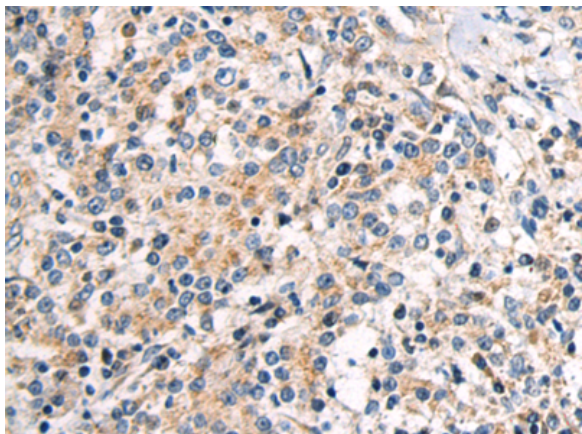
**Purification:** Antigen affinity purification

**Species Reactivity:** Human, Mouse, Rat

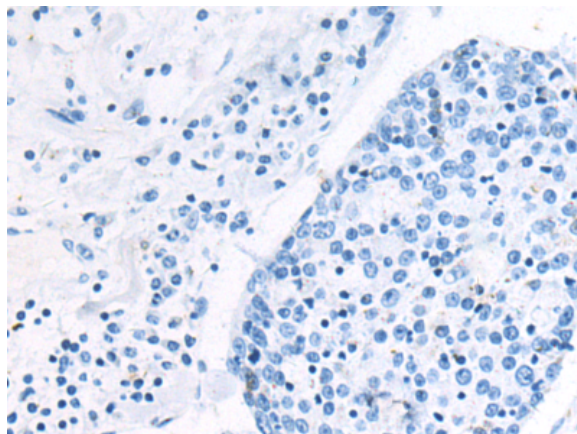
**Constituents:** PBS (without Mg<sup>2+</sup> and Ca<sup>2+</sup>), pH 7.4, 150 mM NaCl, 0.05% Sodium Azide and 40% glycerol

**Research Areas:** Epigenetics and Nuclear Signaling,Cancer

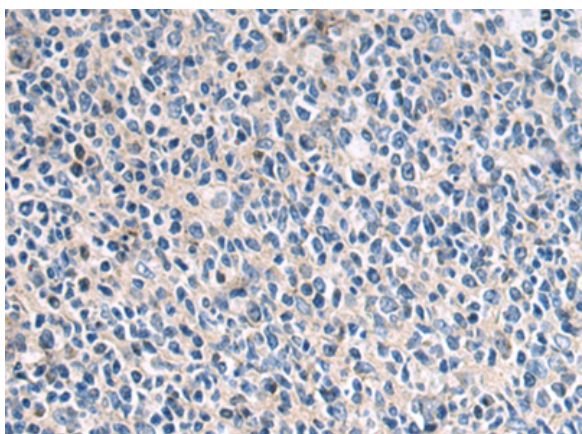
**Storage & Shipping:** Store at -20°C. Avoid repeated freezing and thawing



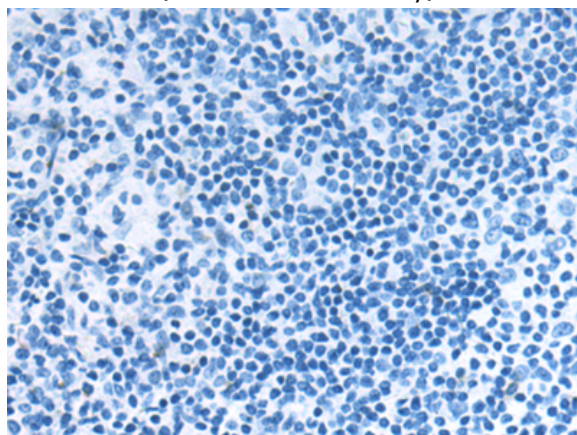
Immunohistochemistry analysis of paraffin embedded Human gastric cancer tissue using 220884(SYCP3 Antibody) at a dilution of 1/50(Cytoplasm).



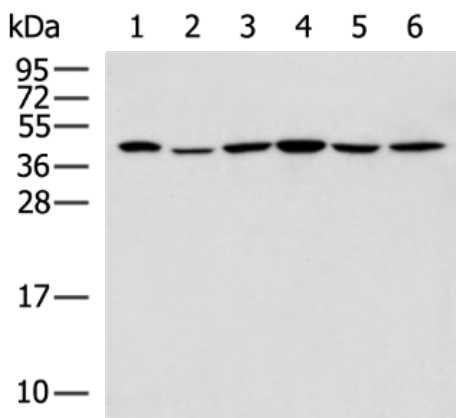
In comparison with the IHC on the left, the same paraffin-embedded Human gastric cancer tissue is first treated with the synthetic peptide and then with 220884(Anti-SYCP3 Antibody) at dilution 1/50.



The image on the left is immunohistochemistry of paraffin-embedded Human tonsil tissue using 220884(Anti-SYCP3 Antibody) at a dilution of 1/50.



In comparison with the IHC on the left, the same paraffin-embedded Human tonsil tissue is first treated with synthetic peptide and then with D262171(Anti-SYCP3 Antibody) at dilution 1/50.



Gel: 12%SDS-PAGE, Lysate: 40 µg;  
 Lane 1-6: K562 cell, Human seminoma tissue,  
 Jurkat cell, Mouse testis tissue, HepG2 cell, TM4 cell  
 lysates;  
 Primary antibody: 220884(SYCP3 Antibody) at  
 dilution 1/550;  
 Secondary antibody: HRP-conjugated Goat anti  
 rabbit IgG at 1/5000 dilution;  
 Exposure time: 20 seconds



# Product Description

Pioneering GTPase and Oncogene Product Development since 2010

---