

SYK RABBIT PAB

Cat.#: S216818

Product Name: Anti-SYK Rabbit Polyclonal Antibody

Synonyms: p72-Syk

UNIPROT ID: P43405 (Gene Accession - BC011399)

Background: This gene encodes a member of the family of non-receptor type Tyr protein kinases. This protein is widely expressed in hematopoietic cells and is involved in coupling activated immunoreceptors to downstream signaling events that mediate diverse cellular responses, including proliferation, differentiation, and phagocytosis. It is thought to be a modulator of epithelial cell growth and a potential tumour suppressor in human breast carcinomas. Alternatively spliced transcript variants encoding different isoforms have been found for this gene.

Immunogen: Fusion protein of human SYK

Applications: ELISA, IHC

Recommended Dilutions: IHC: 15-50; ELISA: 1000-5000

Host Species: Rabbit

Clonality: Rabbit Polyclonal

Isotype: Immunogen-specific rabbit IgG

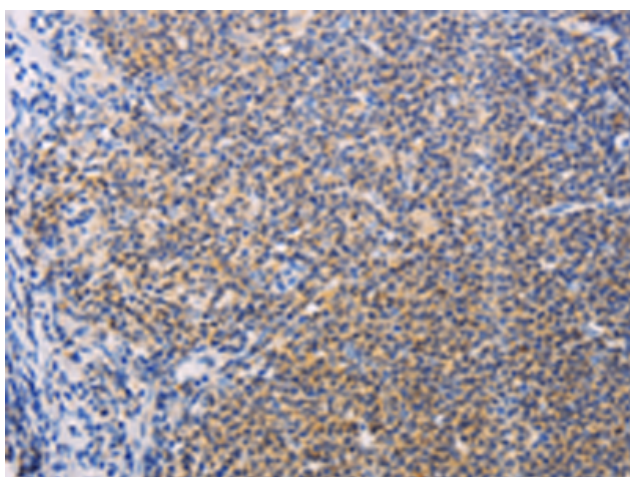
Purification: Antigen affinity purification

Species Reactivity: Human, Mouse, Rat

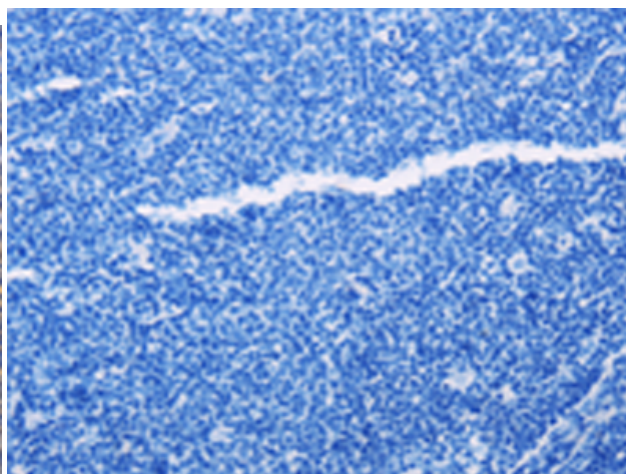
Constituents: PBS (without Mg²⁺ and Ca²⁺), pH 7.4, 150 mM NaCl, 0.05% Sodium Azide and 40% glycerol

Research Areas: Signal Transduction, Cardiovascular, Immunology

Storage & Shipping: Store at -20°C. Avoid repeated freezing and thawing



Immunohistochemistry analysis of paraffin embedded Human lymphoma tissue using 216818(SYK Antibody) at a dilution of 1/15(Cytoplasm).



In comparison with the IHC on the left, the same paraffin-embedded Human lymphoma tissue is first treated with the fusion protein and then with 216818(Anti-SYK Antibody) at dilution 1/15.