

## SYNAPTONEMAL COMPLEX PROTEIN 2 RABBIT PAB

**Cat.#:** N225170

**Product Name:** Anti-Synaptonemal Complex Protein 2 Rabbit pAb

**Synonyms:** SYCP2; SCP2; Synaptonemal complex protein 2; SCP-2; Synaptonemal complex lateral element protein; hsSCP2

**UNIPROT ID:** Q9BX26

**Background:** Major component of the axial/lateral elements of synaptonemal complexes (SCS) during meiotic prophase.

**Immunogen:** Synthesized peptide derived from the Internal region of human SCP-2.

**Applications:** WB,ELISA

**Recommended Dilutions:** WB: 1/500-1/1000 ELISA: 1/10000

**Host Species:** Rabbit

**Clonality:** Rabbit Polyclonal

**Clone ID:** -

**MW:** Calculated MW: 176 kDa; Observed MW: 176 kDa

**Isotype:** IgG

**Purification:** Affinity Purified

**Species Reactivity:** Human

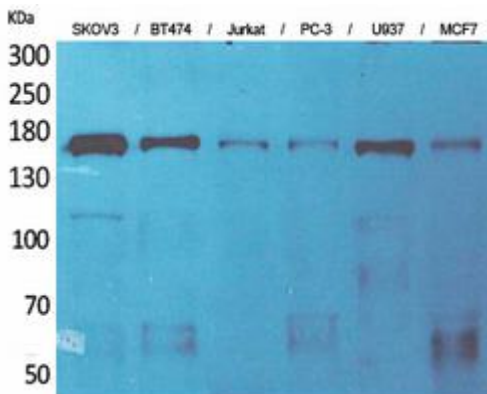
**Conjugation:** Unconjugated

**Modification:** Unmodified

**Constituents:** PBS (without Mg<sup>2+</sup> and Ca<sup>2+</sup>), pH 7.3 containing 50% glycerol, 0.5% BSA and 0.02% sodium azide

**Research Areas:** Cell Biology

**Storage & Shipping:** Store at -20°C. Avoid repeated freezing and thawing



Western blot analysis of Synaptonemal Complex Protein 2 in SKOV-3, BT474, Jurkat, PC-3, U937, MCF-7 lysates using Synaptonemal Complex Protein 2 antibody.