

SYNAPTOPHYSIN LIKE PROTEIN 1 RABBIT MAB

Cat.#: N262963

Product Name: Anti-Synaptophysin Like Protein 1 Rabbit Monoclonal Antibody

Synonyms: Pantophysin; SYPL1

UNIPROT ID: Q16563

Background: Predicted to be involved in chemical synaptic transmission. Located in extracellular exosome.

Immunogen: Recombinant protein of human SYPL1

Applications: WB,IHC-P

Recommended Dilutions: WB: 1/500-1/1000 IHC: 1/50-1/100

Host Species: Rabbit

Clonality: Rabbit Monoclonal

Clone ID: R02-9K7

MW: Calculated MW: 29 kDa; Observed MW: 29 kDa

Isotype: IgG

Purification: Affinity Purified

Species Reactivity: Human

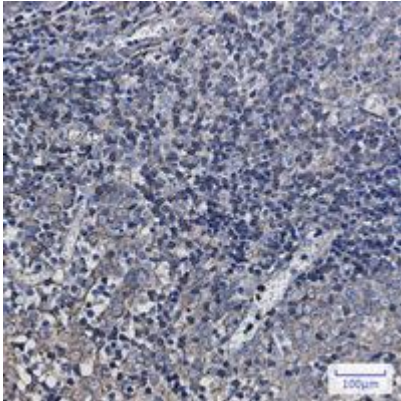
Conjugation: Unconjugated

Modification: Unmodified

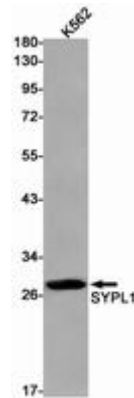
Constituents: PBS (without Mg²⁺ and Ca²⁺), pH 7.3 containing 50% glycerol, 0.5% BSA and 0.02% sodium azide

Research Areas: Neuroscience

Storage & Shipping: Store at -20°C. Avoid repeated freezing and thawing



Immunohistochemistry analysis of paraffin-embedded Human tonsil using SYPL1 antibody. High-pressure and temperature Sodium Citrate pH 6.0 was used for antigen retrieval.



Western blot analysis of SYPL1 in K562 lysates using Synaptophysin Like Protein 1 antibody.