

SYNAPTOPHYSIN RABBIT PAB

Cat.#: N225585

Product Name: Anti-Synaptophysin Rabbit pAb

Synonyms: SYP; Synaptophysin; Major synaptic vesicle protein p38

UNIPROT ID: P08247

Background: SYP Possibly involved in structural functions as organizing other membrane components or in targeting the vesicles to the plasma membrane. Involved in the regulation of short-term and long-term synaptic plasticity. Belongs to the synaptophysin/synaptobrevin family. Homohexamer or homotetramer. Note: This description may include information from UniProtKB.

Immunogen: A synthesized peptide derived from human Synaptophysin

Applications: WB,IHC-P,ICC/IF

Recommended Dilutions: WB: 1/500-1/1000 IHC: 1/50-1/100 IF: 1/50-1/200

Host Species: Rabbit

Clonality: Rabbit Polyclonal

Clone ID: -

MW: Calculated MW: 34 kDa; Observed MW: 38 kDa

Isotype: IgG

Purification: Affinity Chromatography

Species Reactivity: Human,Mouse,Rat

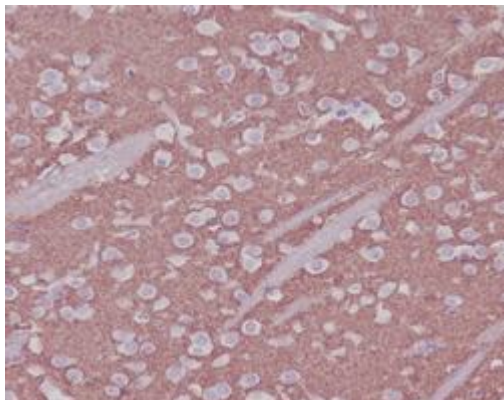
Conjugation: Unconjugated

Modification: Unmodified

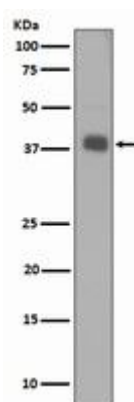
Constituents: PBS (without Mg²⁺ and Ca²⁺), pH 7.3 containing 50% glycerol, 0.5% BSA and 0.02% sodium azide

Research Areas: Neuroscience

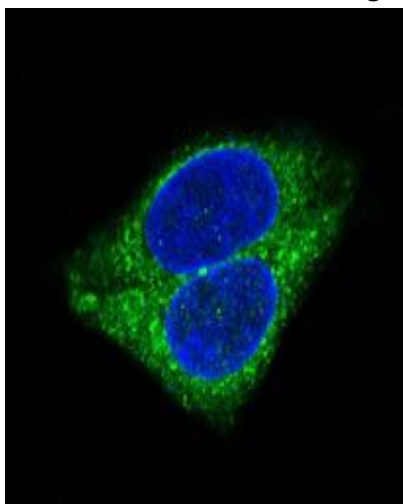
Storage & Shipping: Store at -20°C. Avoid repeated freezing and thawing



Immunohistochemistry analysis of paraffin-embedded mouse brain using Synaptophysin antibody. High-pressure and temperature Sodium Citrate pH 6.0 was used for antigen retrieval.



Western blot analysis of Synaptophysin in SH-SY5Y lysates using Synaptophysin antibody.



Immunofluorescence analysis of Synaptophysin in PC-12 using Synaptophysin antibody.