

## SYNDECAN 1 RABBIT PAB

**Cat.#:** N225120

**Product Name:** Anti-Syndecan 1 Rabbit pAb

**Synonyms:** SDC1; SDC; Syndecan-1; SYND1; CD138

**UNIPROT ID:** P18827

**Background:** Cell surface proteoglycan that bears both heparan sulfate and chondroitin sulfate and that links the cytoskeleton to the interstitial matrix.

**Immunogen:** The antiserum was produced against synthesized peptide derived from the Internal region of human SDC1. AA range:191-240

**Applications:** WB,IHC-P,ELISA

**Recommended Dilutions:** WB: 1/500-1/1000 IHC: 1/50-1/100 ELISA: 1/10000

**Host Species:** Rabbit

**Clonality:** Rabbit Polyclonal

**Clone ID:** -

**MW:** Calculated MW: 32 kDa; Observed MW: 32 kDa

**Isotype:** IgG

**Purification:** Affinity Purified

**Species Reactivity:** Human

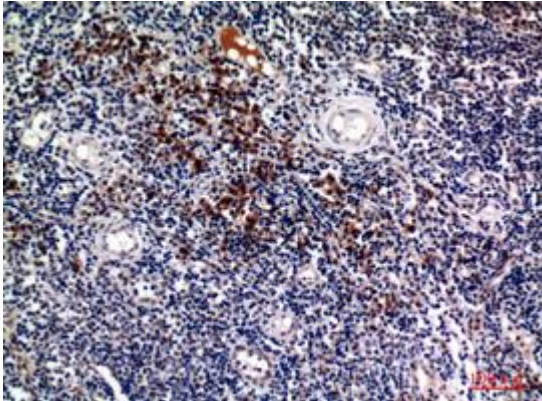
**Conjugation:** Unconjugated

**Modification:** Unmodified

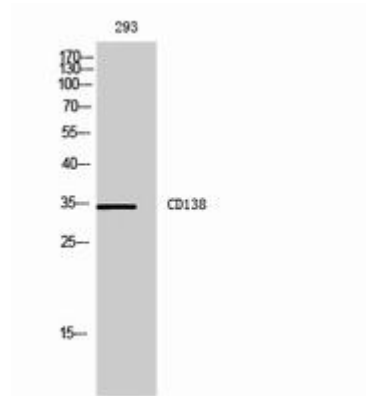
**Constituents:** PBS (without Mg<sup>2+</sup> and Ca<sup>2+</sup>), pH 7.3 containing 50% glycerol, 0.5% BSA and 0.02% sodium azide

**Research Areas:** Cell Biology

**Storage & Shipping:** Store at -20°C. Avoid repeated freezing and thawing



Immunohistochemistry analysis of paraffin-embedded Human tonsils using Syndecan 1 antibody. High-pressure and temperature Sodium Citrate pH 6.0 was used for antigen retrieval.



Western blot analysis of Syndecan 1 in 293 lysates using Syndecan 1 antibody.