

SYNPO2 RABBIT PAB

Cat.#: S220987

Product Name: Anti-SYNPO2 Rabbit Polyclonal Antibody

Synonyms:

UNIPROT ID: Q9UMS6 (Gene Accession - NP_001122405)

Background: Synaptopodin-2 is a protein that in humans is encoded by the SYNPO2 gene. Has an actin-binding and actin-bundling activity. Synaptopodin is a proline-rich, actin-associated protein expressed in mature dendritic spines and renal podocytes. Synaptopodin appears to play a role in the actin-based plasticity of spines by linking actin to the spine apparatus.

Immunogen: Synthetic peptide of human SYNPO2

Applications: ELISA, IHC

Recommended Dilutions: IHC: 25-100; ELISA: 2000-5000

Host Species: Rabbit

Clonality: Rabbit Polyclonal

Isotype: Immunogen-specific rabbit IgG

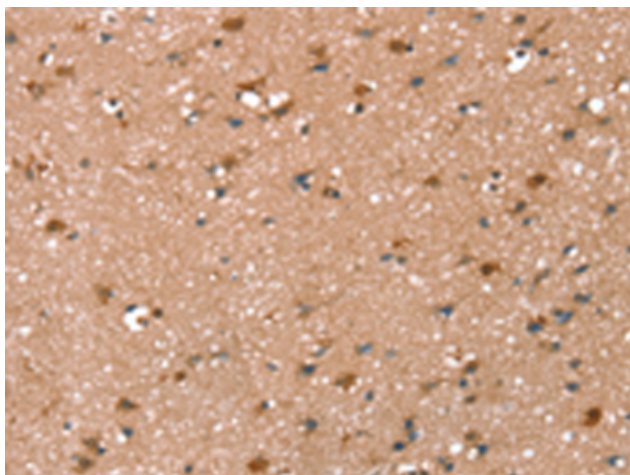
Purification: Antigen affinity purification

Species Reactivity: Human

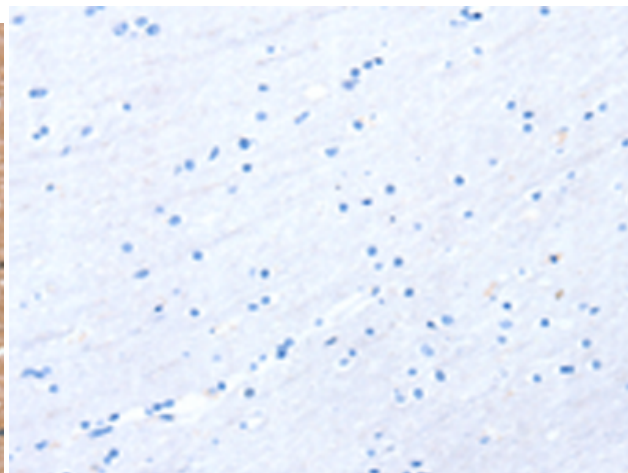
Constituents: PBS (without Mg²⁺ and Ca²⁺), pH 7.4, 150 mM NaCl, 0.05% Sodium Azide and 40% glycerol

Research Areas: Signal Transduction, Cancer

Storage & Shipping: Store at -20°C. Avoid repeated freezing and thawing



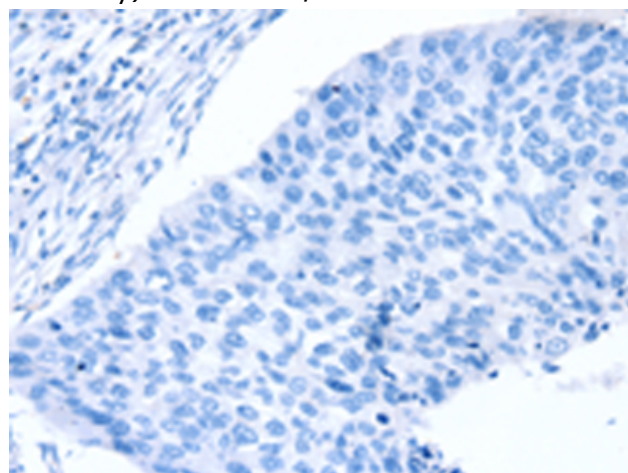
Immunohistochemistry analysis of paraffin embedded Human brain tissue using 220987(SYNPO2 Antibody) at a dilution of 1/50(Cytoplasm or Nucleus).



In comparison with the IHC on the left, the same paraffin-embedded Human brain tissue is first treated with the synthetic peptide and then with 220987(Anti-SYNPO2 Antibody) at dilution 1/50.



The image on the left is immunohistochemistry of paraffin-embedded Human esophagus cancer tissue using 220987(Anti-SYNPO2 Antibody) at a dilution of 1/50.



In comparison with the IHC on the left, the same paraffin-embedded Human esophagus cancer tissue is first treated with synthetic peptide and then with D262325(Anti-SYNPO2 Antibody) at dilution 1/50.