

SYP RABBIT PAB

Cat.#: S222403

Product Name: Anti-SYP Rabbit Polyclonal Antibody

Synonyms: MRX96; MRXSYP; XLID96

UNIPROT ID: P08247 (Gene Accession - NP_003170)

Background: This gene encodes an integral membrane protein of small synaptic vesicles in brain and endocrine cells. The protein also binds cholesterol and is thought to direct targeting of vesicle-associated membrane protein 2 (synaptobrevin) to intracellular compartments. Mutations in this gene are associated with an X-linked form of cognitive disability.

Immunogen: Synthetic peptide of human SYP

Applications: ELISA, WB, IHC

Recommended Dilutions: IHC: 50-200;WB: 1000-5000;ELISA: 5000-10000

Host Species: Rabbit

Clonality: Rabbit Polyclonal

Isotype: Immunogen-specific rabbit IgG

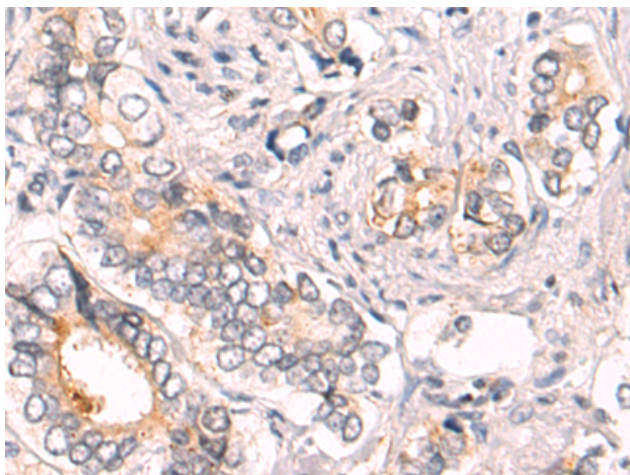
Purification: Antigen affinity purification

Species Reactivity: Human, Mouse, Rat

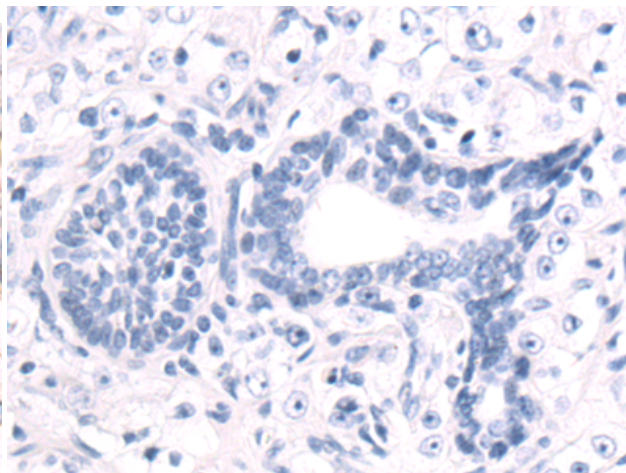
Constituents: PBS (without Mg²⁺ and Ca²⁺), pH 7.4, 150 mM NaCl, 0.05% Sodium Azide and 40% glycerol

Research Areas: Neuroscience

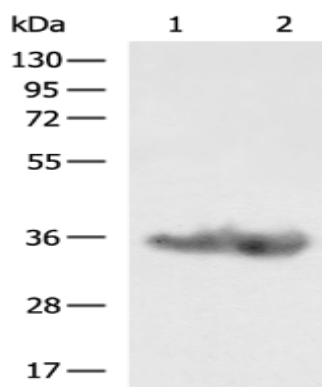
Storage & Shipping: Store at -20°C. Avoid repeated freezing and thawing



Immunohistochemistry analysis of paraffin embedded Human prostate cancer tissue using 222403(SYP Antibody) at a dilution of 1/50(Cytoplasm).



In comparison with the IHC on the left, the same paraffin-embedded Human prostate cancer tissue is first treated with the synthetic peptide and then with 222403(Anti-SYP Antibody) at dilution 1/50.



Gel: 8%SDS-PAGE, Lysate: 40 µg;

Lane 1-2: Mouse brain tissue, Human cerebella tissue lysates;

Primary antibody: 222403(SYP Antibody) at dilution 1/1000;

Secondary antibody: HRP-conjugated Goat anti rabbit IgG at 1/5000 dilution;

Exposure time: 1 second