

SYT16 RABBIT PAB

Cat.#: S221324

Product Name: Anti-SYT16 Rabbit Polyclonal Antibody

Synonyms: yt14r; SYT14L; syt14r; Strep14; CHR14SYT

UNIPROT ID: Q17RD7 (Gene Accession - NP_114120)

Background: May be involved in the trafficking and exocytosis of secretory vesicles in non-neuronal tissues. Is Ca²⁺-independent.

Immunogen: Synthetic peptide of human SYT16

Applications: ELISA, IHC

Recommended Dilutions: IHC: 25-100; ELISA: 5000-10000

Host Species: Rabbit

Clonality: Rabbit Polyclonal

Isotype: Immunogen-specific rabbit IgG

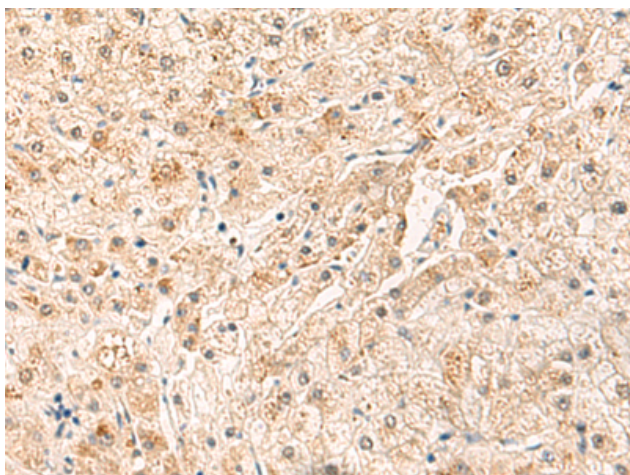
Purification: Antigen affinity purification

Species Reactivity: Human, Mouse

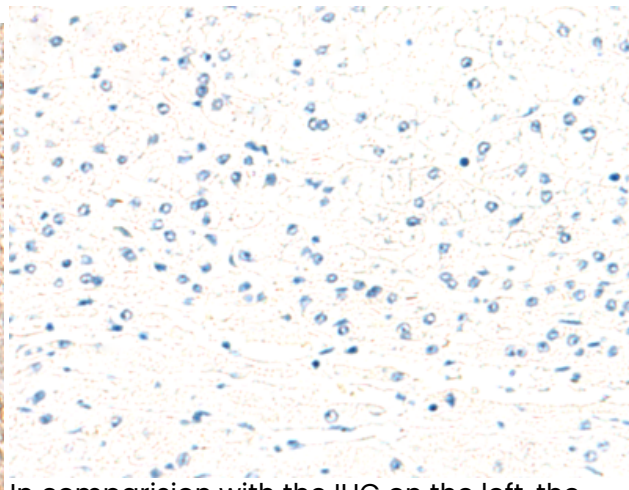
Constituents: PBS (without Mg²⁺ and Ca²⁺), pH 7.4, 150 mM NaCl, 0.05% Sodium Azide and 40% glycerol

Research Areas: Neuroscience

Storage & Shipping: Store at -20°C. Avoid repeated freezing and thawing



Immunohistochemistry analysis of paraffin embedded Human liver cancer tissue using 221324(SYT16 Antibody) at a dilution of 1/30(Cytoplasm).



In comparison with the IHC on the left, the same paraffin-embedded Human liver cancer tissue is first treated with the synthetic peptide and then with 221324(Anti-SYT16 Antibody) at dilution 1/30.