

SYT17 RABBIT PAB

Cat.#: S210612

Product Name: Anti-SYT17 Rabbit Polyclonal Antibody

Synonyms: sytXVII

UNIPROT ID: Q9BSW7 (Gene Accession - BC004518)

Background: Synaptotagmin XVII (SytXVII), also known as Synaptotagmin-17 (SYT17) or Protein B/K, is a 474 amino acid peripheral membrane protein that belongs to the Synaptotagmin family and contains two C2 domains. While expressed abundantly in brain (frontal and temporal lobes, hippocampus, hypothalamus, amygdala, substantia nigra and pituitary), kidney and prostate, Synaptotagmin XVII is also expressed in fetal brain, kidney and lung. The gene that encodes Synaptotagmin XVII contains 100,082 bases and maps to human chromosome 16p12.3. Encoding over 900 genes and consisting of approximately 90 million base pairs, chromosome 16 makes up nearly 3% of the human genome and is associated with a variety of genetic disorders, such as giant axonal neuropathy, Rubinstein-Taybi syndrome and Crohn's disease. An association with systemic lupus erythematosus and a number of other autoimmune disorders with the pericentromeric region of chromosome 16 has led to the identification of SLC5A11 as a potential autoimmune modifier.

Immunogen: Fusion protein of human SYT17

Applications: ELISA, WB, IHC

Recommended Dilutions: IHC: 50-200;WB: 200-1000;ELISA: 1000-5000

Host Species: Rabbit

Clonality: Rabbit Polyclonal

Isotype: Immunogen-specific rabbit IgG

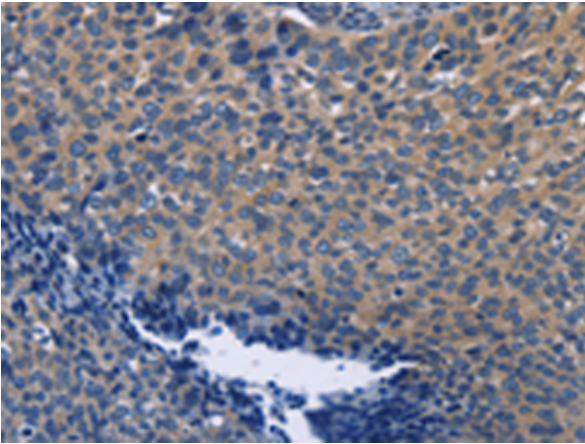
Purification: Antigen affinity purification

Species Reactivity: Human, Mouse, Rat

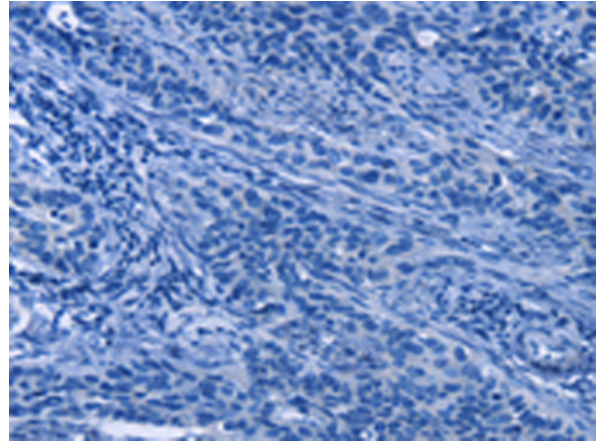
Constituents: PBS (without Mg²⁺ and Ca²⁺), pH 7.4, 150 mM NaCl, 0.05% Sodium Azide and 40% glycerol

Research Areas: Cell Biology

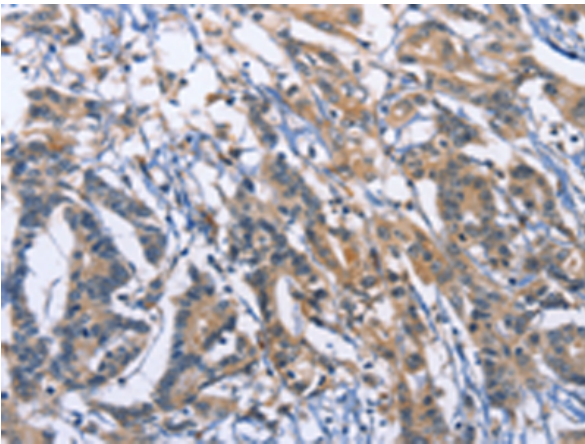
Storage & Shipping: Store at -20°C. Avoid repeated freezing and thawing



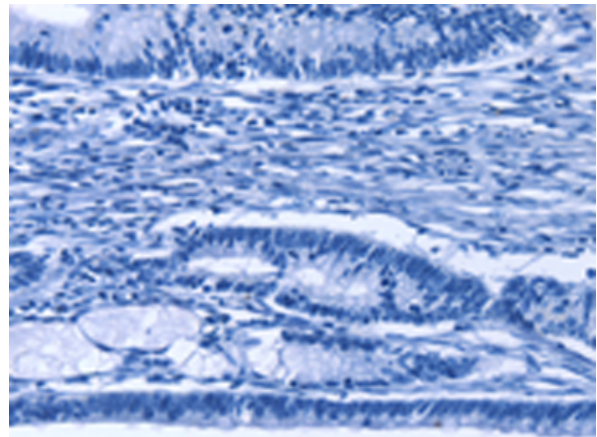
Immunohistochemistry analysis of paraffin embedded Human cervical cancer tissue using 210612(SYT17 Antibody) at a dilution of 1/60(Cytoplasm).



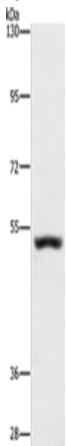
In comparison with the IHC on the left, the same paraffin-embedded Human cervical cancer tissue is first treated with the fusion protein and then with 210612(Anti-SYT17 Antibody) at dilution 1/60.



The image on the left is immunohistochemistry of paraffin-embedded Human colon cancer tissue using 210612(Anti-SYT17 Antibody) at a dilution of 1/60.



In comparison with the IHC on the left, the same paraffin-embedded Human colon cancer tissue is first treated with fusion protein and then with D121278(Anti-SYT17 Antibody) at dilution 1/60.



Gel: 6%SDS-PAGE, Lysate: 40 µg;
Lane: Mouse kidney tissue;
Primary antibody: 210612(SYT17 Antibody) at dilution 1/650;
Secondary antibody: Goat anti rabbit IgG at 1/8000 dilution;
Exposure time: 1 minute



Product Description

Pioneering GTPase and Oncogene Product Development since 2010
