

## SYT7 RABBIT PAB

**Cat.#:** S216810

**Product Name:** Anti-SYT7 Rabbit Polyclonal Antibody

**Synonyms:** IPCA7, IPCA-7, SYTVII, PCANAP7, SYT-VII

**UNIPROT ID:** O43581 (Gene Accession - BC125170 )

**Background:** This gene is a member of the synaptotagmin gene family and encodes a protein similar to other family members that mediate calcium-dependent regulation of membrane trafficking in synaptic transmission. A similar protein in rodents mediates hormone secretion and lysosome exocytosis. In humans, expression of this gene has been associated with prostate cancer. Alternatively spliced transcript variants encoding multiple isoforms have been observed for this gene.

**Immunogen:** Fusion protein of human SYT7

**Applications:** ELISA, WB, IHC

**Recommended Dilutions:** IHC: 15-50;WB: 200-1000;ELISA: 1000-5000

**Host Species:** Rabbit

**Clonality:** Rabbit Polyclonal

**Isotype:** Immunogen-specific rabbit IgG

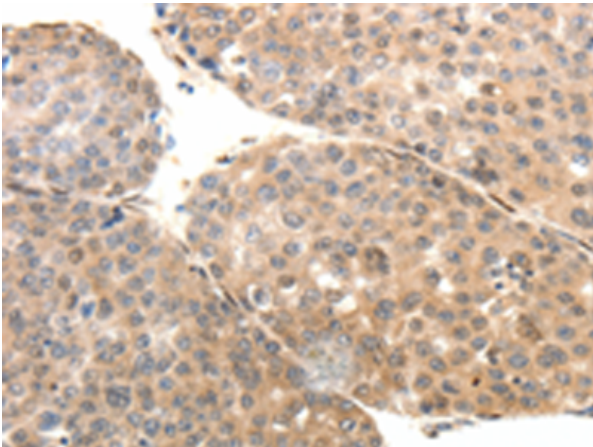
**Purification:** Antigen affinity purification

**Species Reactivity:** Human, Mouse

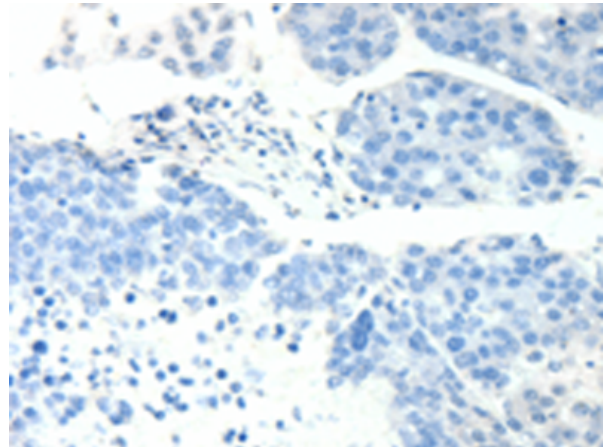
**Constituents:** PBS (without Mg<sup>2+</sup> and Ca<sup>2+</sup>), pH 7.4, 150 mM NaCl, 0.05% Sodium Azide and 40% glycerol

**Research Areas:** Signal Transduction, Neuroscience

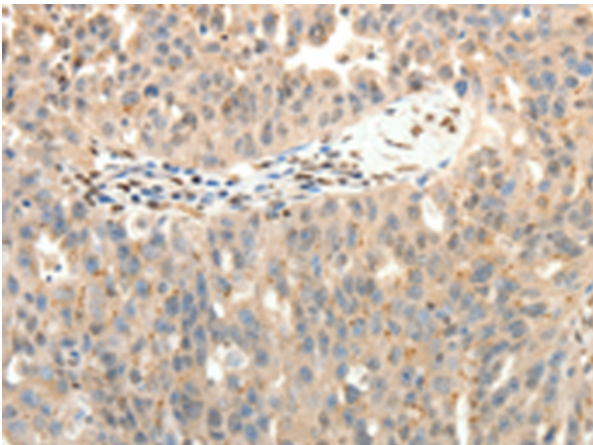
**Storage & Shipping:** Store at -20°C. Avoid repeated freezing and thawing



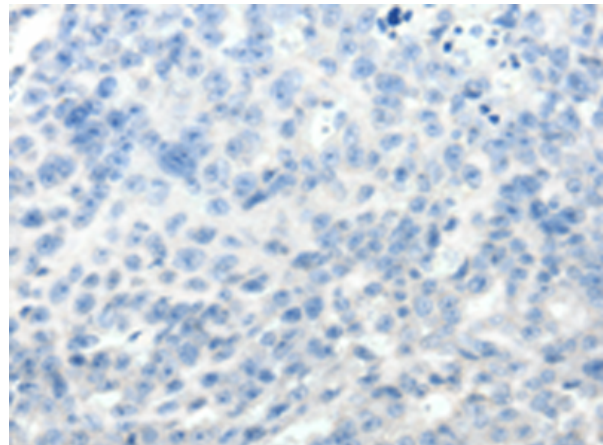
Immunohistochemistry analysis of paraffin embedded Human liver cancer tissue using 216810(SYT7 Antibody) at a dilution of 1/15(Cytoplasm, Nucleus).



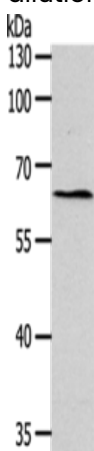
In comparison with the IHC on the left, the same paraffin-embedded Human liver cancer tissue is first treated with the fusion protein and then with 216810(Anti-SYT7 Antibody) at dilution 1/15.



The image on the left is immunohistochemistry of paraffin-embedded Human ovarian cancer tissue using 216810(Anti-SYT7 Antibody) at a dilution of 1/15.



In comparison with the IHC on the left, the same paraffin-embedded Human ovarian cancer tissue is first treated with fusion protein and then with D221275(Anti-SYT7 Antibody) at dilution 1/15.



Gel: 10%SDS-PAGE, Lysate: 40  $\mu$ g;  
Lane: SKOV3 cells;  
Primary antibody: 216810(SYT7 Antibody) at dilution 1/200;  
Secondary antibody: Goat anti rabbit IgG at 1/8000 dilution;  
Exposure time: 5 minutes



# Product Description

Pioneering GTPase and Oncogene Product Development since 2010

---