

## TAAR2 RABBIT PAB

**Cat.#:** S222121

**Product Name:** Anti-TAAR2 Rabbit Polyclonal Antibody

**Synonyms:** GPR58; taR-2

**UNIPROT ID:** Q9PIP5 (Gene Accession - NP\_001028252 )

**Background:** Orphan receptor.

**Immunogen:** Synthetic peptide of human TAAR2

**Applications:** ELISA, IHC

**Recommended Dilutions:** IHC: 30-150; ELISA: 5000-10000

**Host Species:** Rabbit

**Clonality:** Rabbit Polyclonal

**Isotype:** Immunogen-specific rabbit IgG

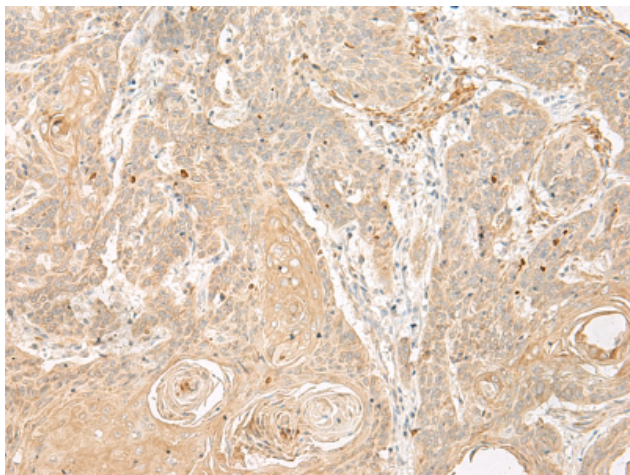
**Purification:** Antigen affinity purification

**Species Reactivity:** Human, Mouse, Rat

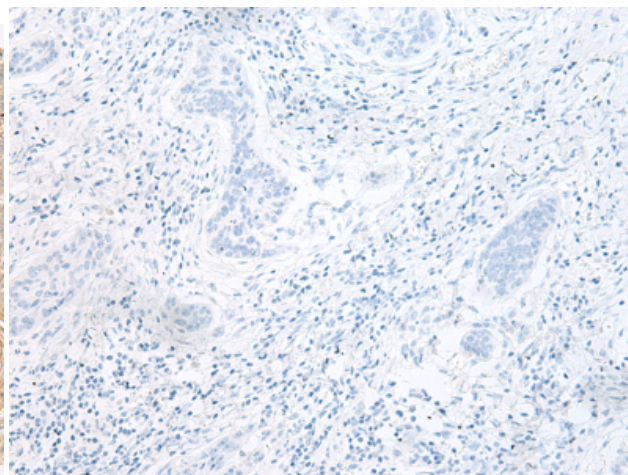
**Constituents:** PBS (without Mg<sup>2+</sup> and Ca<sup>2+</sup>), pH 7.4, 150 mM NaCl, 0.05% Sodium Azide and 40% glycerol

**Research Areas:** Signal Transduction

**Storage & Shipping:** Store at -20°C. Avoid repeated freezing and thawing



Immunohistochemistry analysis of paraffin embedded Human esophagus cancer tissue using 222121(TAAR2 Antibody) at a dilution of 1/30(Cell membrane).



In comparison with the IHC on the left, the same paraffin-embedded Human esophagus cancer tissue is first treated with the synthetic peptide and then with 222121(Anti-TAAR2 Antibody) at dilution 1/30.